

UNENE Graduate Course
Reactor Thermal-Hydraulics
Design and Analysis

McMaster University

Whitby

March 11-12, March 25-26,
April 8-9, April 22-23, 2006

Introduction

Dr. Nik Popov

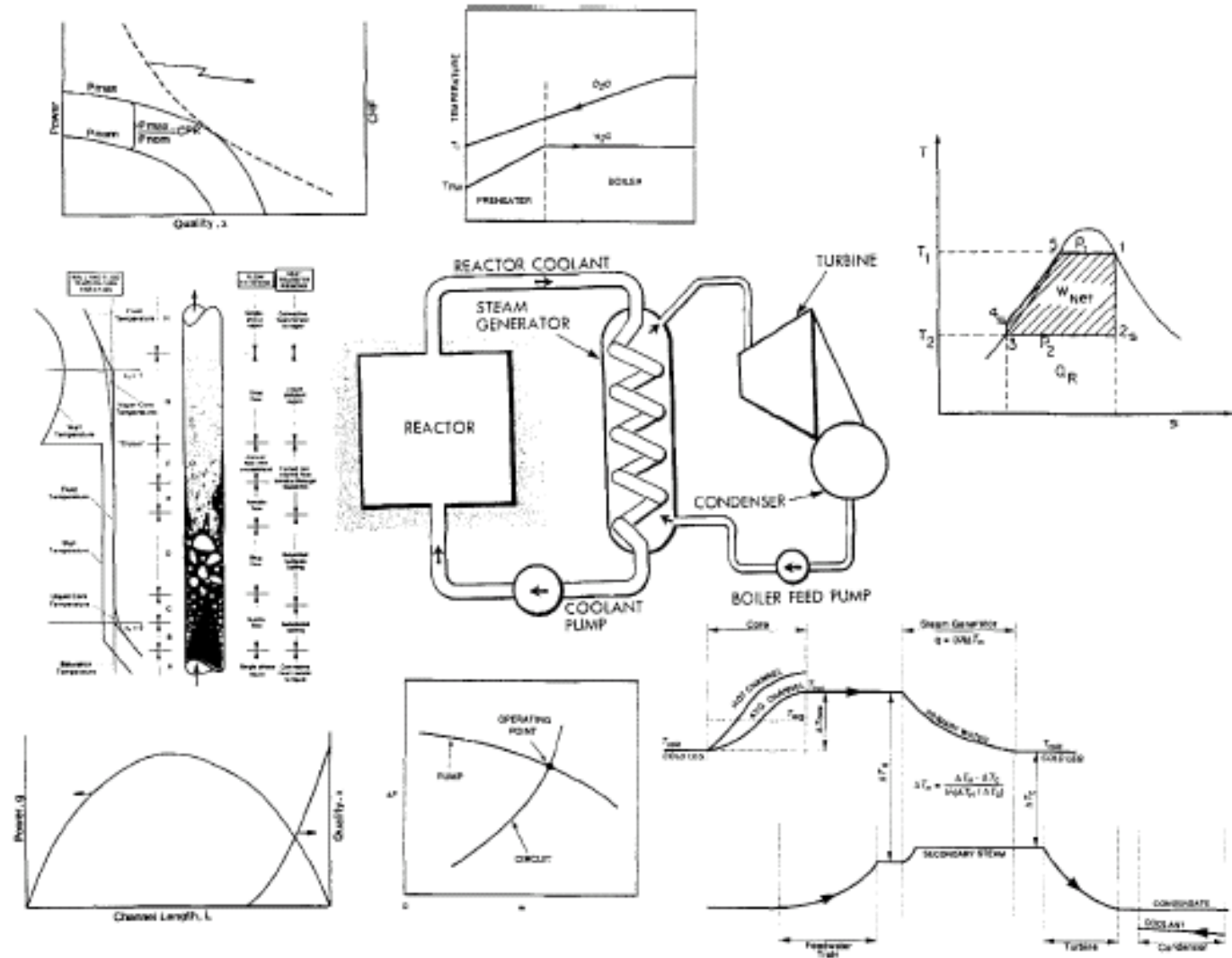
Introduction to TH Design

- Course focused on TH design of the reactor core and heat transport system, and interrelated
 - systems, such as steam generators, turbines, etc., and
 - components, such as valves, pumps, pipes, heat exchangers, etc.
- Disciplines involved
 - Reactor physics
 - Heat transfer
 - Fluid mechanics
 - Thermodynamics
 - Stress analysis, etc

Introduction to TH Design (cont'd)

- Important aspects to consider and optimize
 - Safety
 - Cost
 - Material limits (temps, mechanical stress, erosion, corrosion, etc.).
 - Regulations
 - Past experience
 - Standardized design requirements
 - Quality insurance
 - Marketability
- “Good design process is evolutionary”!

Course Overall Scope Diagram



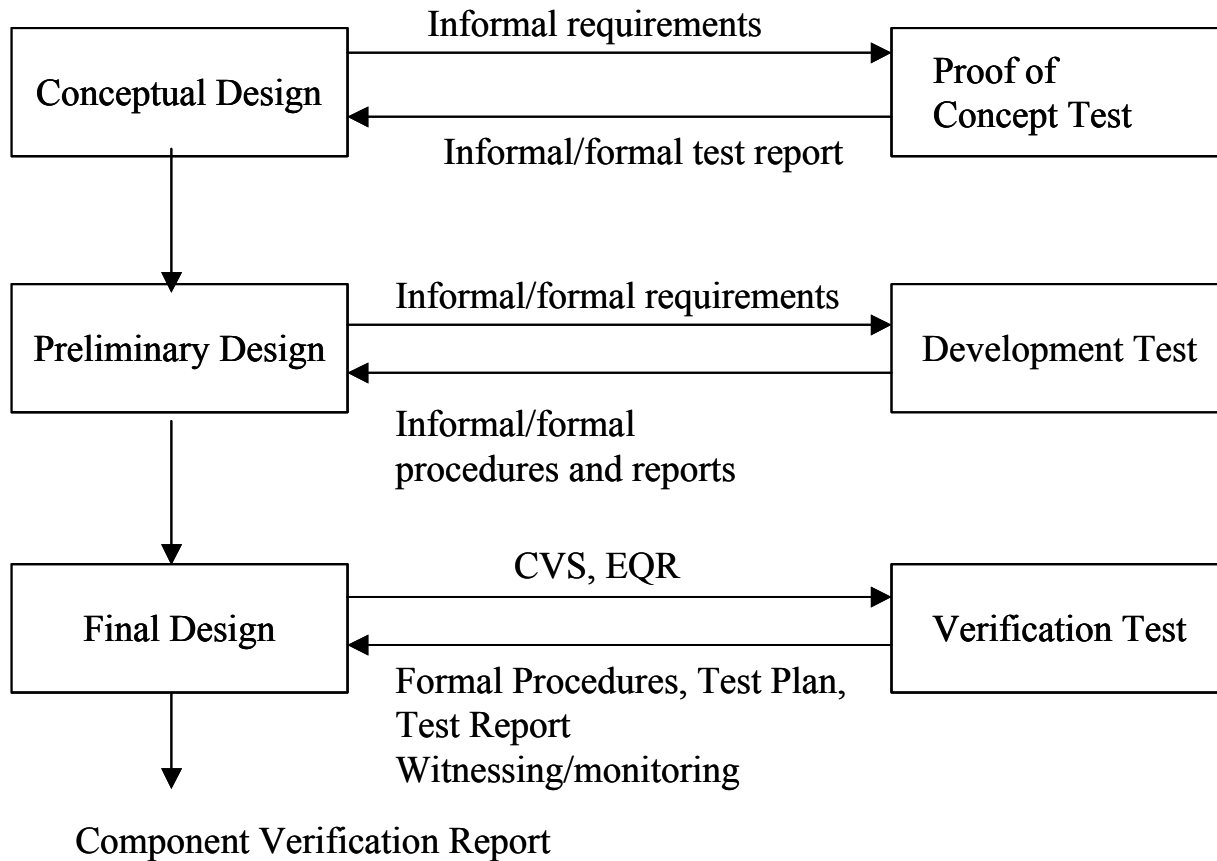
The Design Process

- Design principles
 - Establish improved design practices
 - Take into account feedback from previous designs
 - Design more margins into the new designs
- Design methods
 - Analysis concepts
 - Design guides
 - Design tools
 - Verification
 - Training of staff
- Design Development

The Design Process (cont'd)

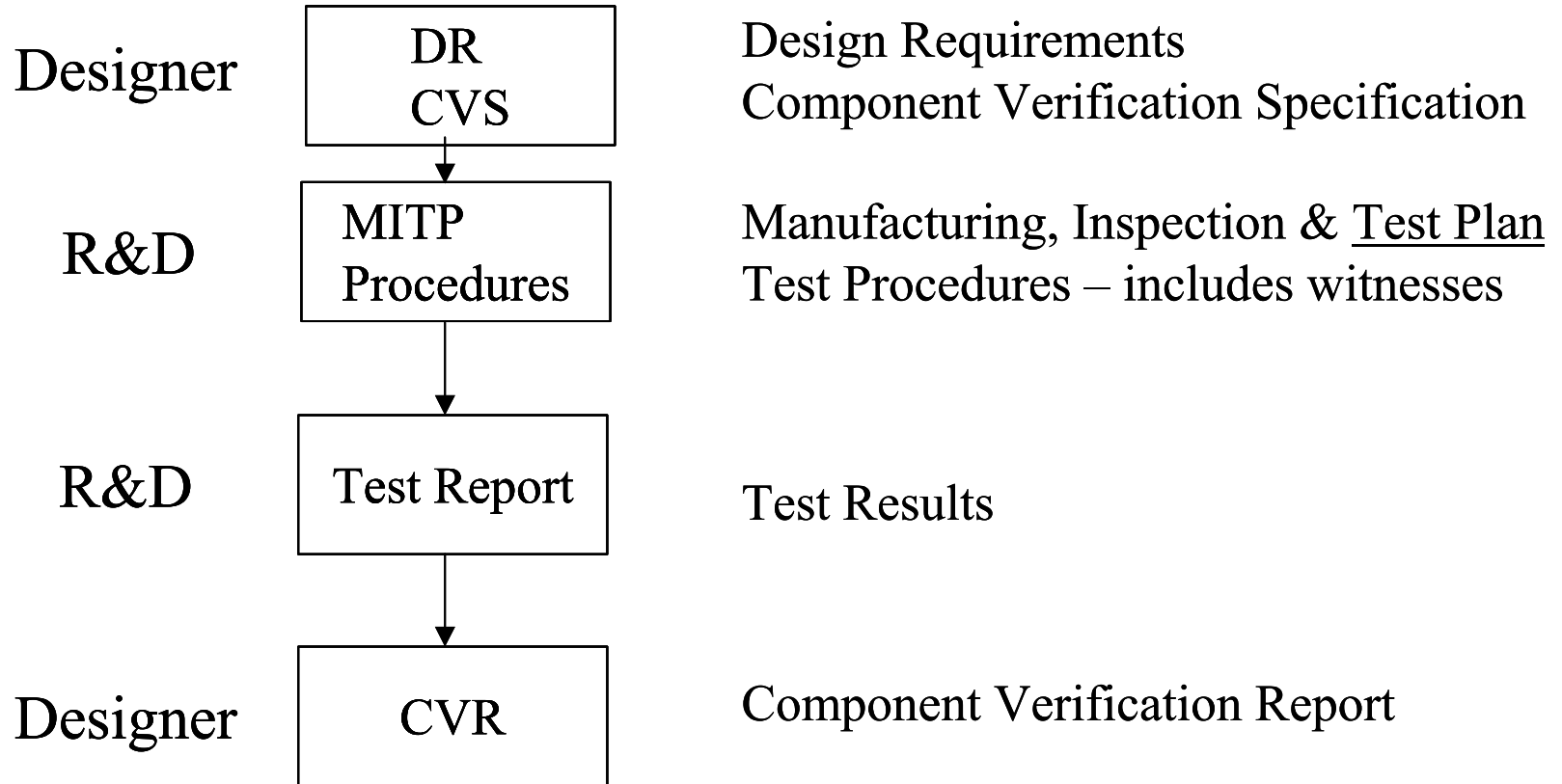
- Design Development
 - Identify specific correlations and methodologies
 - Perform laboratory testing
 - Take into account feedback from sites
- Design
 - Establish main ground rules
 - Optimize design
 - Interaction between different design groups and disciplines
- Produce design documents
 - Design Requirements (DR)
 - Design Description (DD)
 - Design Manuals (DM)
 - Technical Descriptions (TD)
 - Generic Design Deviations (GDD)
 - Commissioning Procedures
 - Equipment Dockets

Linkage Between Design and R&D



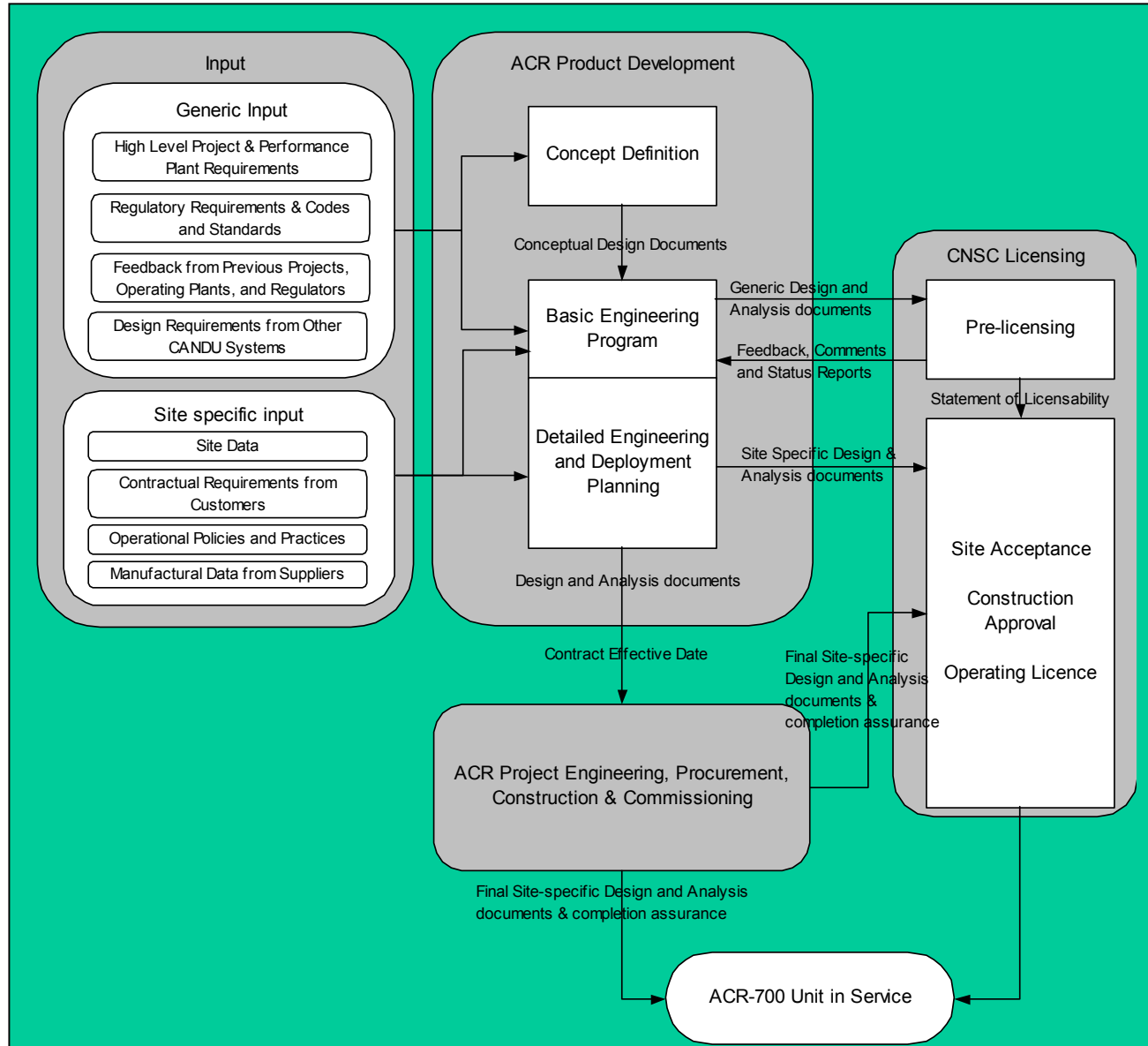
N286.2 Clause 6

Design Verification Process

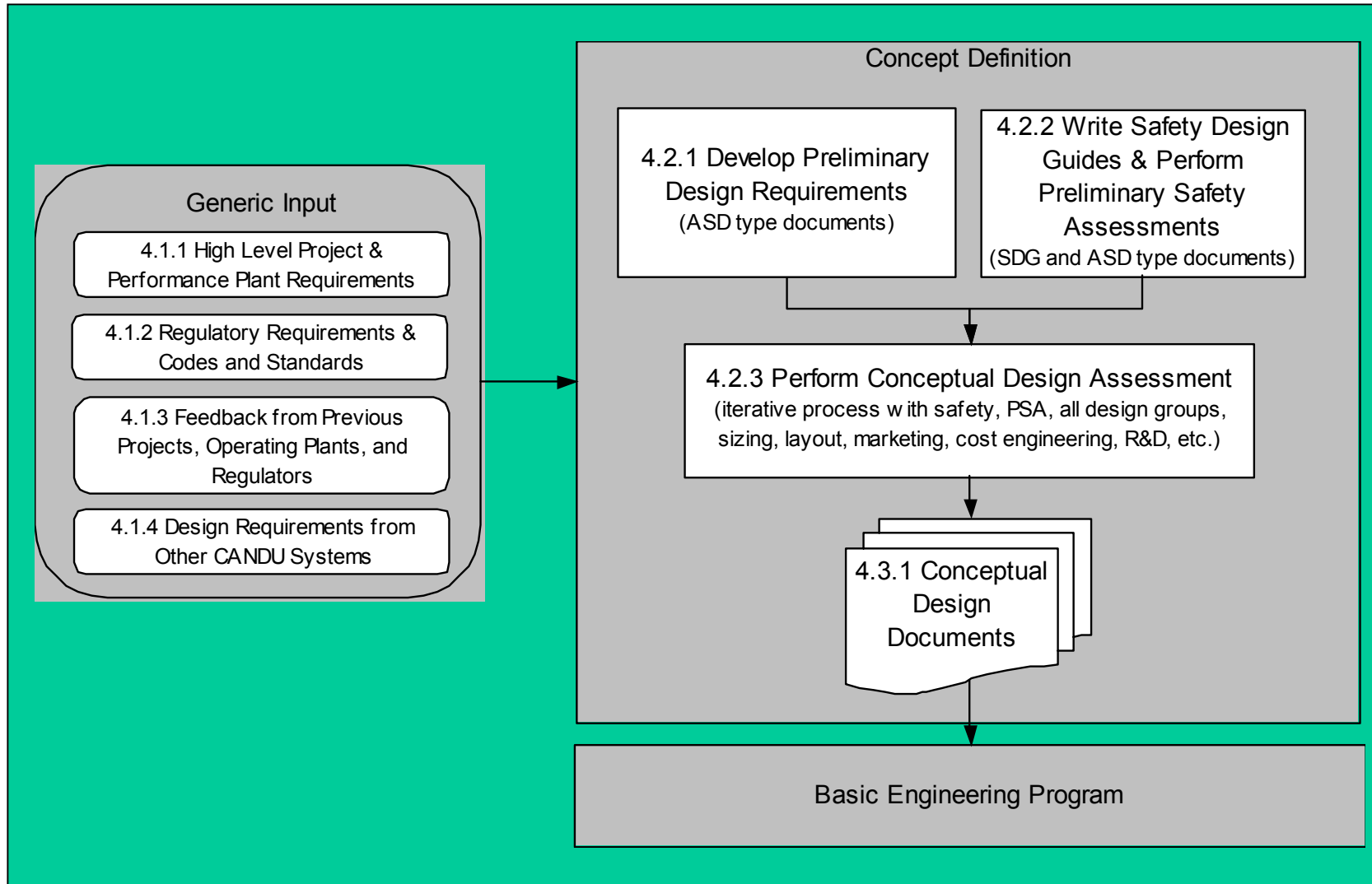


Verification Testing at AECL carried out under specific procedures to meet N286.2 Clause 6 requirements.

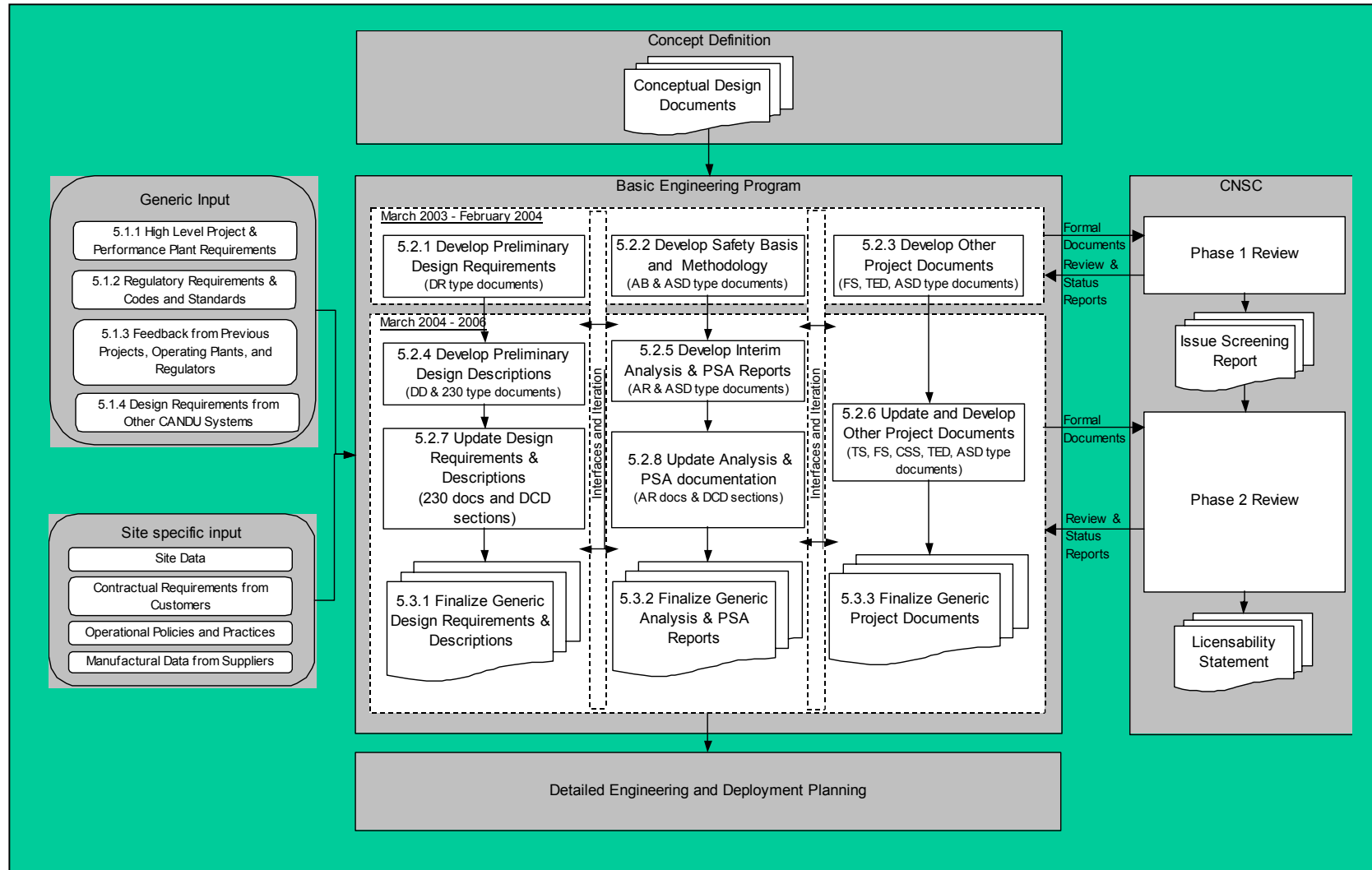
Generic Design Process



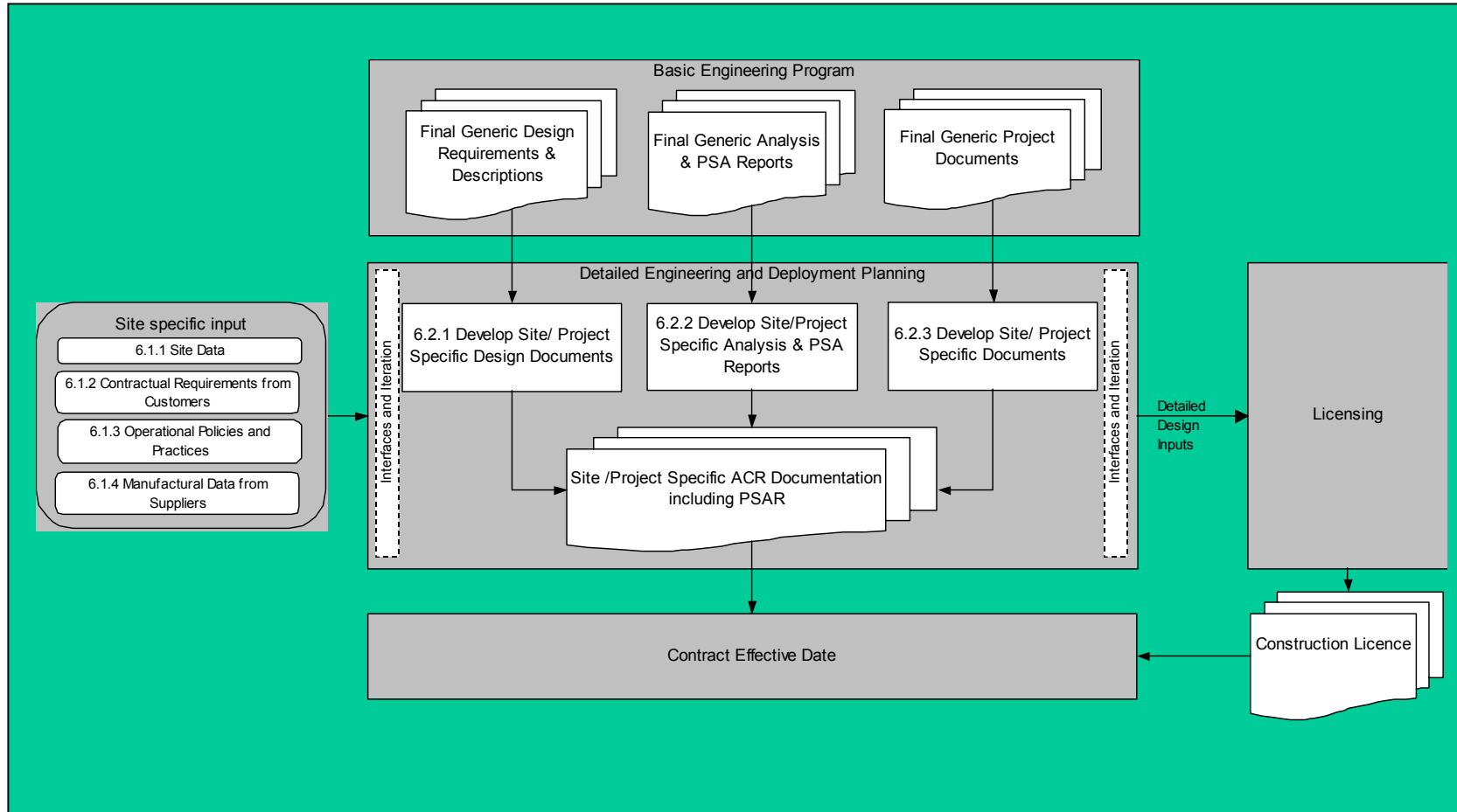
Generic Design Process (cont'd)



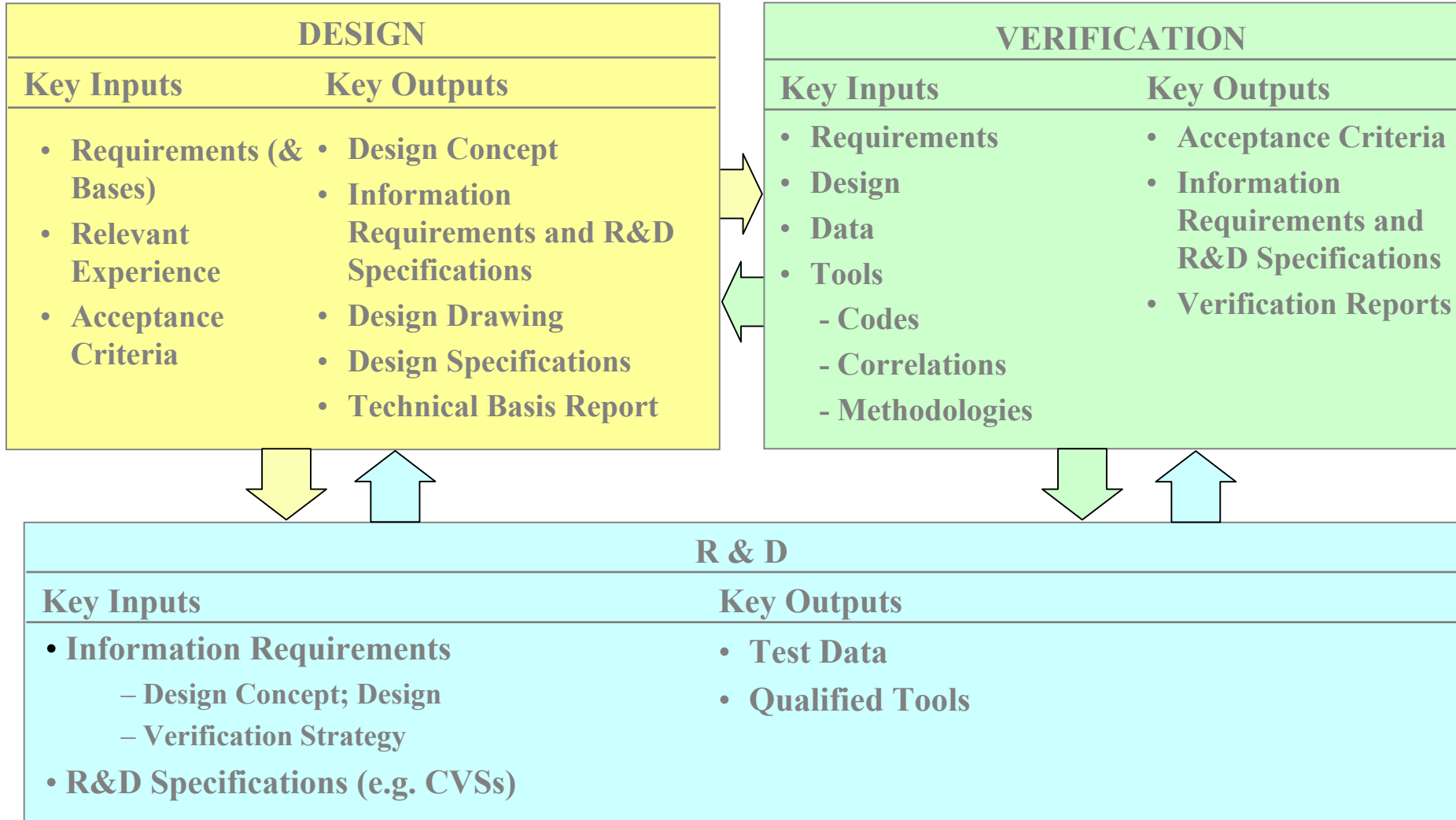
Generic Design Process (cont'd)



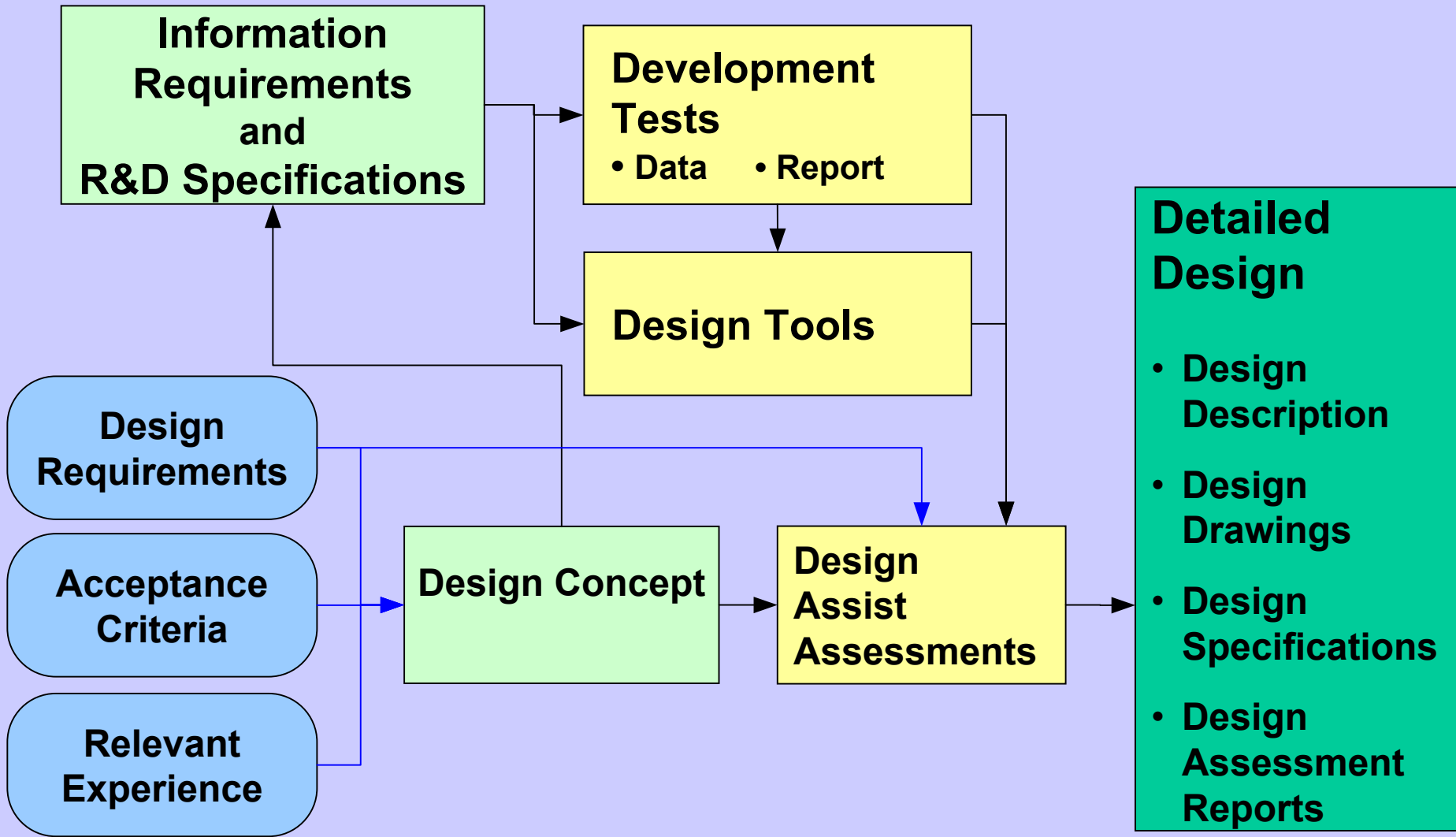
Generic Design Process (cont'd)



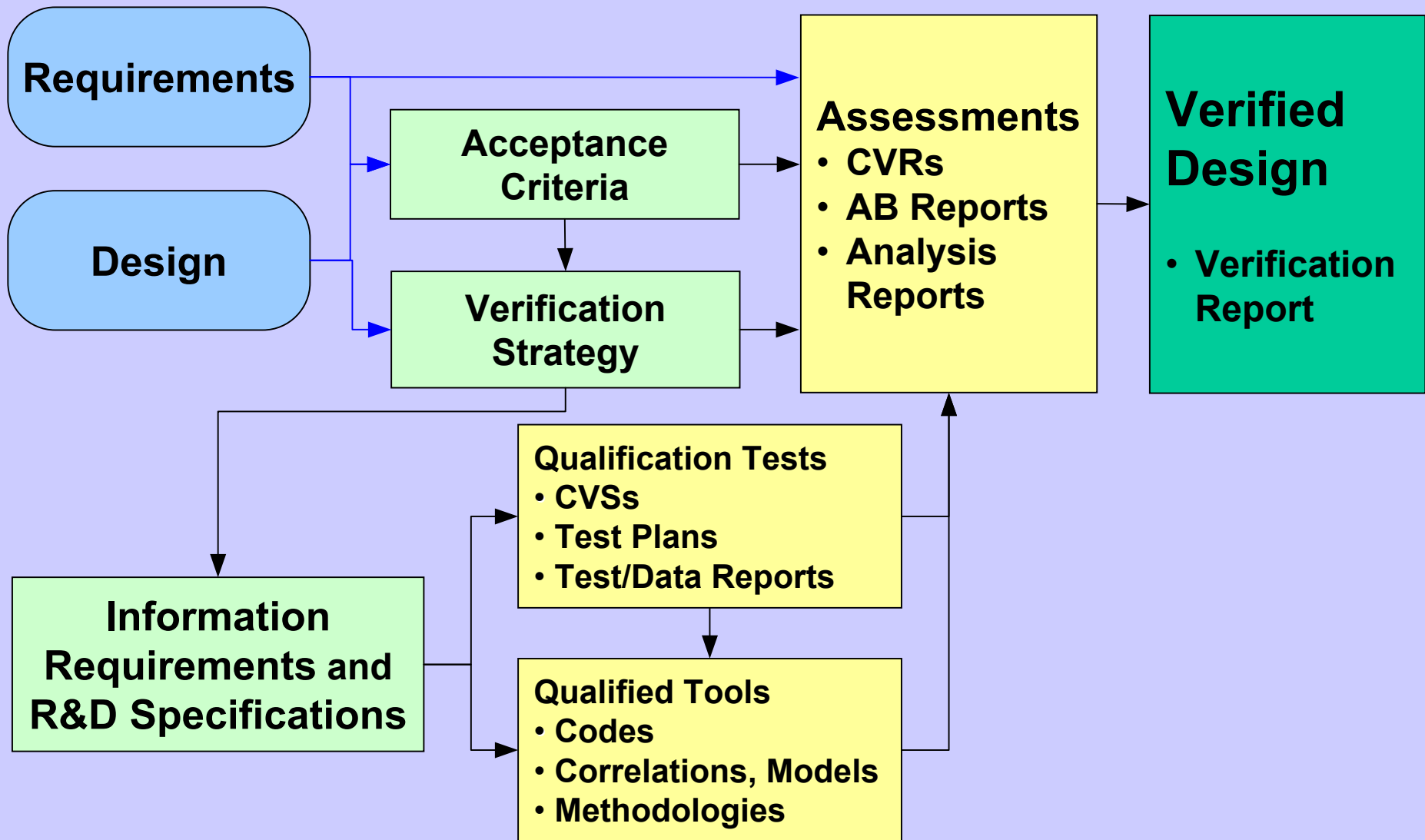
Key Design Activities



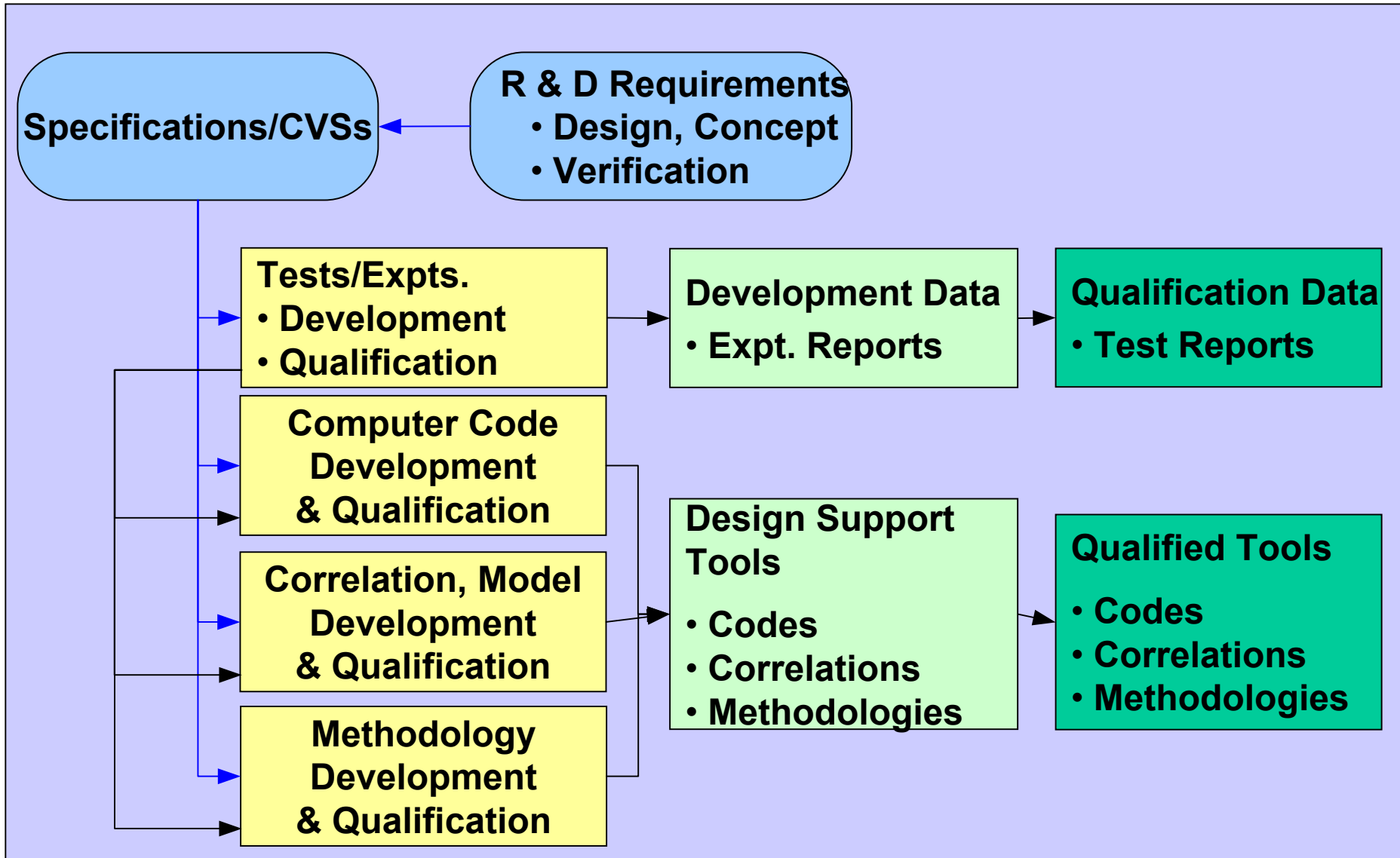
Design Process



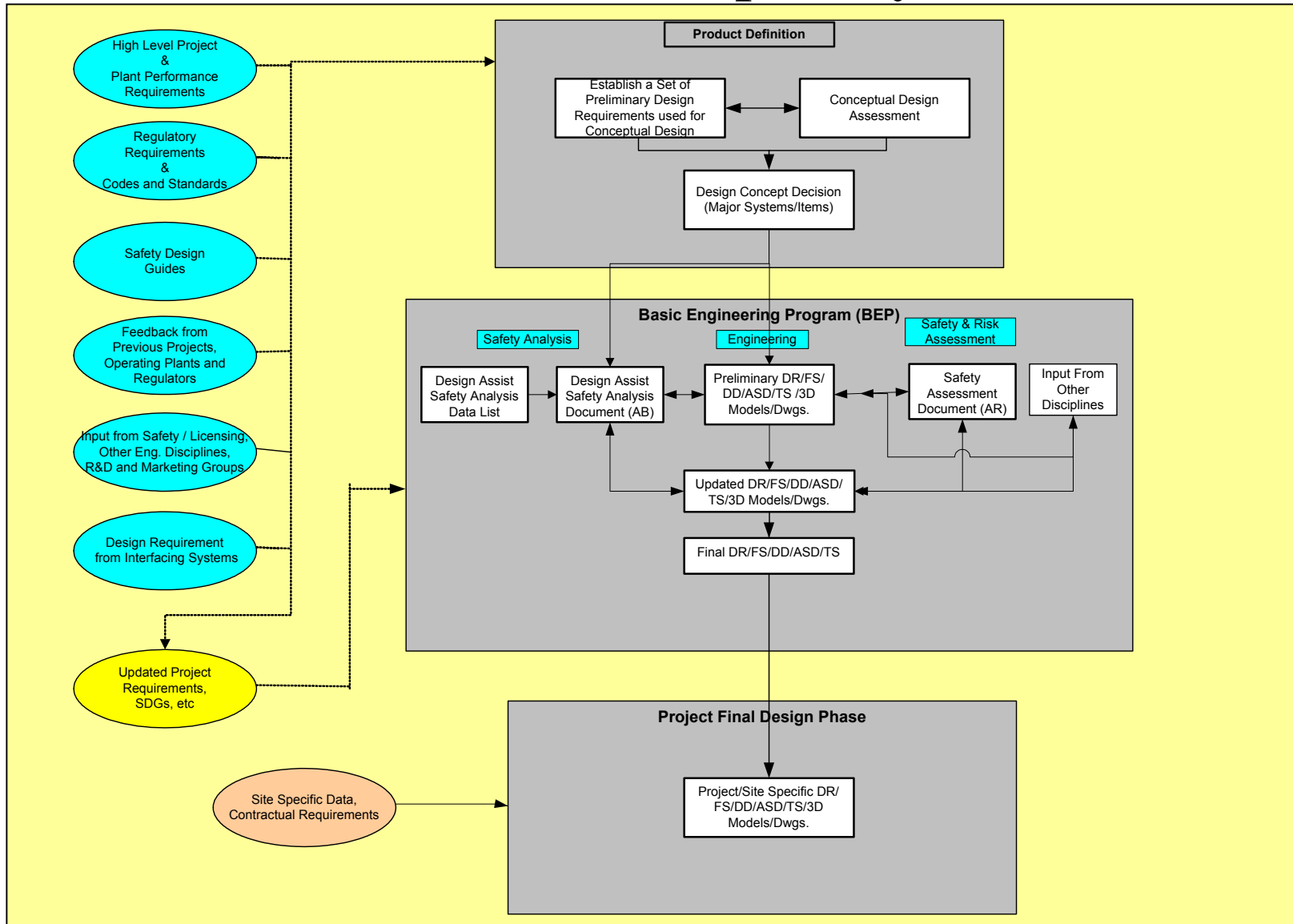
Verification Process



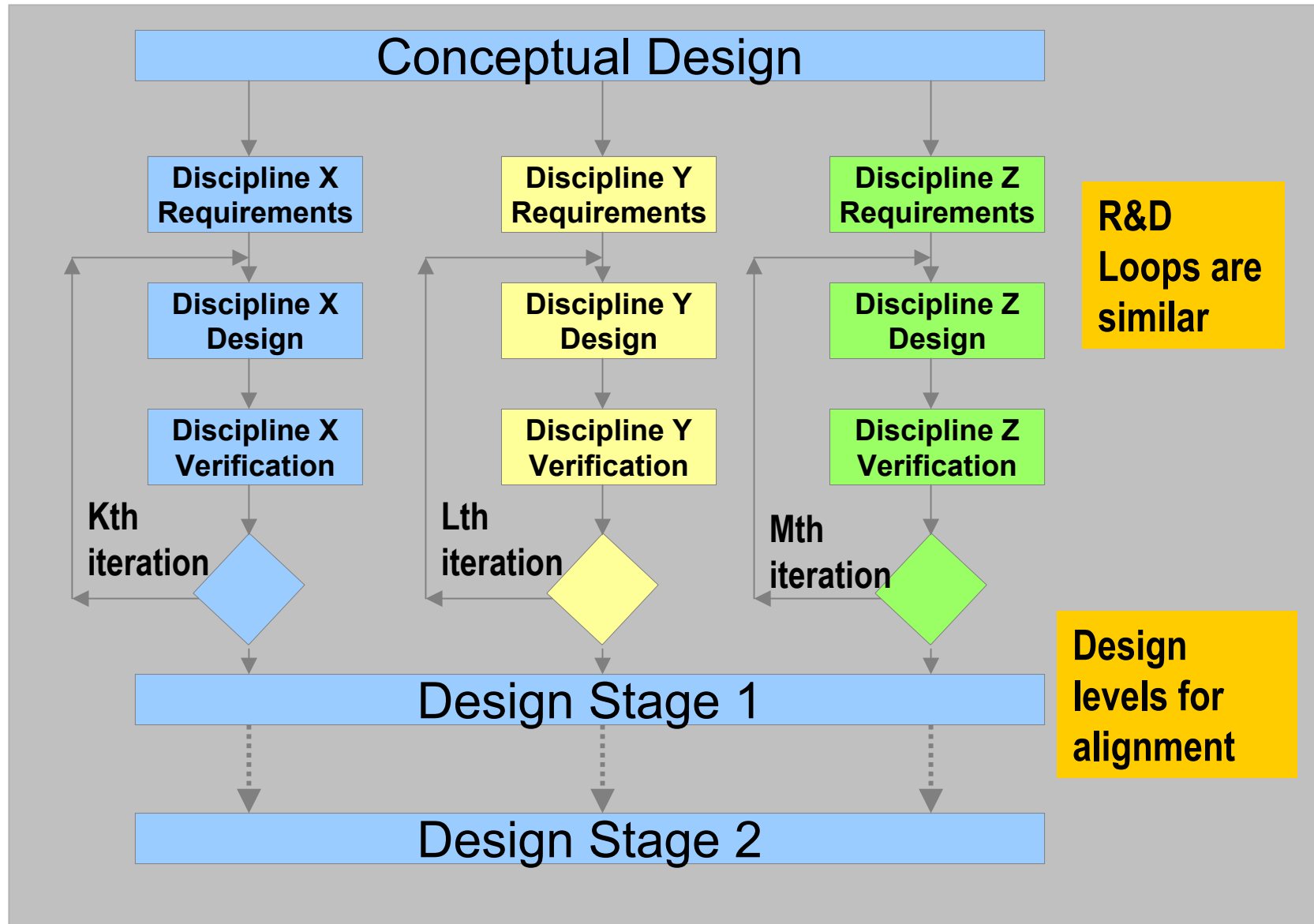
R & D Process



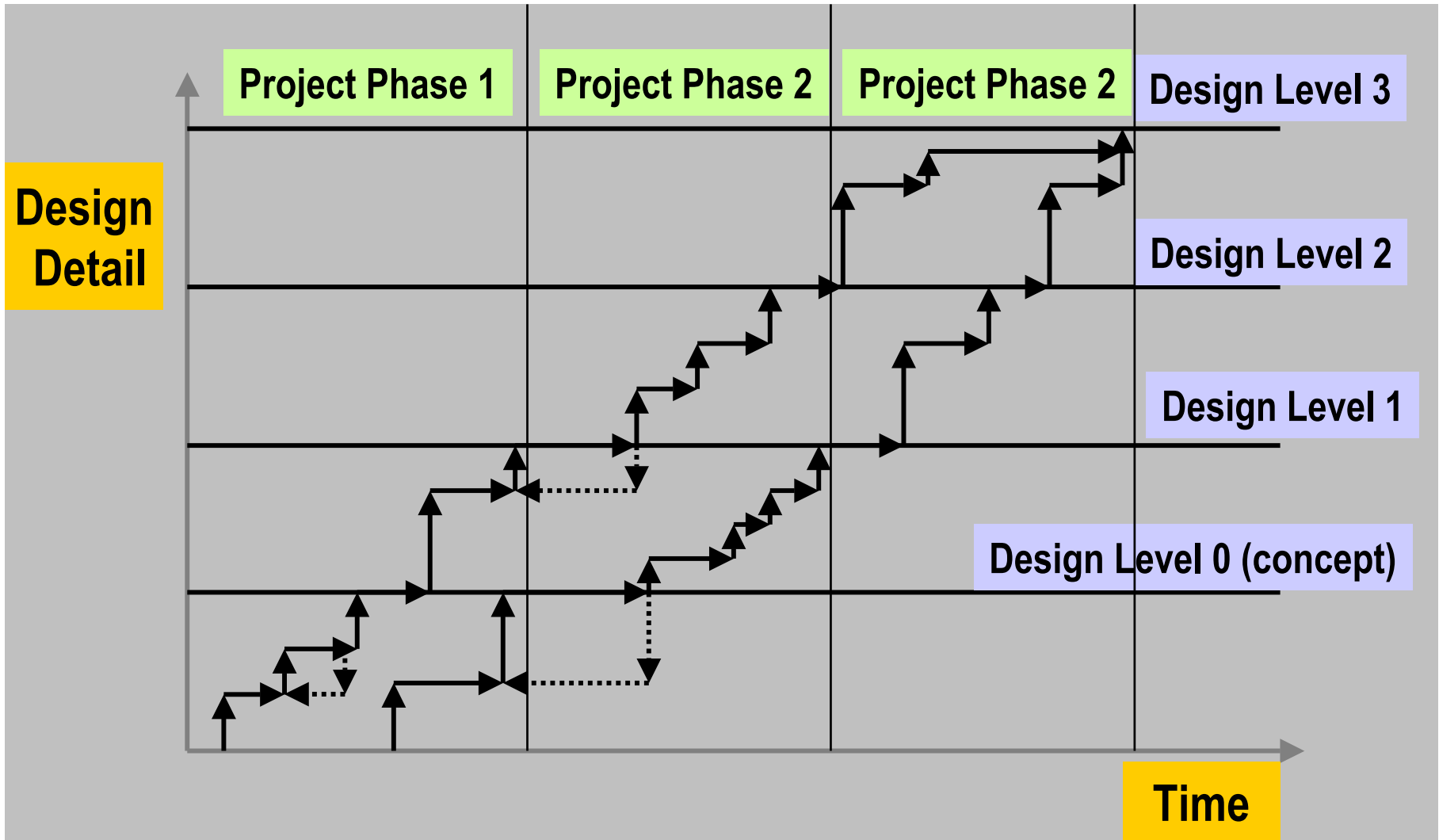
Example of Process for Preparation of Design Documentation & Multidisciplinary Interfaces



Design Iterative Process



Design Process – Cascading Steps



Questions?