

Welding Metallurgy

Metallurgical Effects of the Weld Thermal Cycle

Lecture Scope

- Metallurgical phenomena involved in welding
- Effects on weld and HAZ properties

Weld and Heat Affected Zone

A welded joint consists of:

- **weld metal**
 - melted and re-solidified base metal mixed with filler metal (if added)
- **heat affected zone (HAZ)**
 - the region around the weld whose properties or microstructure are affected by the thermal cycle
 - reheating also alters the structure of underlying weld metal in multi-pass welds
- **and base metal**

Metallurgical Phenomena

- **Welding is a complex process that involves:**
 - Gas-metal & slag-metal reactions
 - Solidification
 - Metallurgical reactions in the solid state
 - annealing & recovery
 - grain growth
 - precipitation
 - phase transformation
- **These metallurgical phenomena control weld strength and ductility**

Gas-Metal Reactions

- Reactive gases (especially N_2 , O_2 , H_2) may be present in the arc atmosphere due to surface contamination, imperfect shielding, or purposeful additions.
- These gases dissociate in the arc and react rapidly with the high temperature, turbulent liquid metal in the weld pool.
- Once dissolved in the metal, oxygen and nitrogen combine with deoxidizers such as Si or Al. The resulting oxides or nitrides remain as small inclusions in the weld metal.
- Excess dissolved gas is rejected during solidification and may cause porosity (e.g. hydrogen in Al)
- Dissolved hydrogen can cause cracking in steels

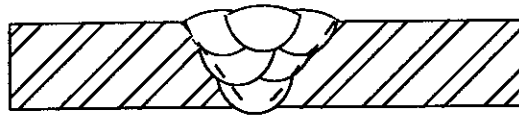
Slag-Metal Reactions

- Fluxes and slags interact with the molten weld metal
- The slags used in flux shielded processes are designed to absorb deoxidation products and other contaminants
- The cleanliness and properties of the weld metal depend on the oxidation potential of the arc atmosphere and on the type of flux
- Highly basic fluxes reduce weld metal oxygen content and give superior notch toughness. Acid fluxes tend to give higher oxygen contents and poor notch toughness.
- Fluxes may also be used to modify weld metal composition by transfer of alloying elements from the slag to the liquid metal

Dilution

- Dilution results from mixing of filler and base metals
 - Dilution ratio is the mass of base metal melted divided by the total mass of melted metal
- Weld pool mixing results in a uniform fused zone, except when large differences exist between filler and parent composition
- A sharp boundary lies between the fused zone and base metal
- Dilution is influenced by joint preparation, welding process and procedure

Low dilution



High dilution



Solidification

- Factors controlling the solidification modes of metals are:
 - temperature gradient
 - composition
 - rate of solidification

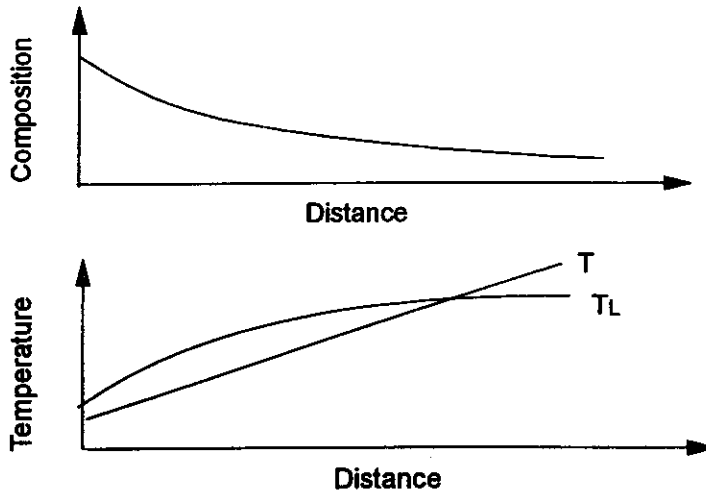
(

(

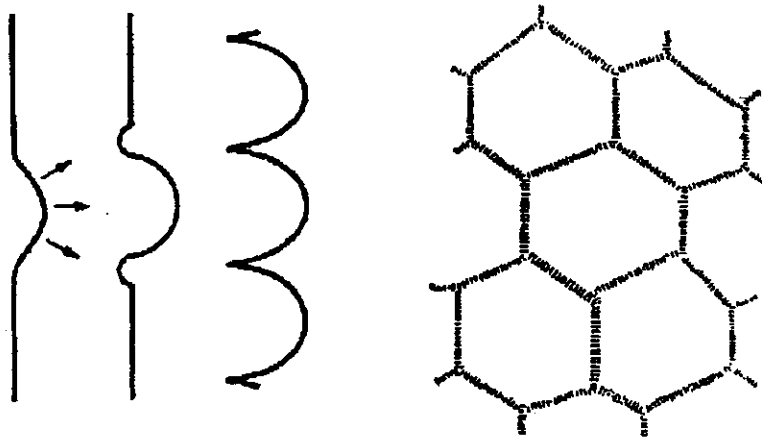
9

Constitutional Undercooling

The variation in composition, temperature, and freezing temperature in front of a solid liquid interface can make a plane interface unstable



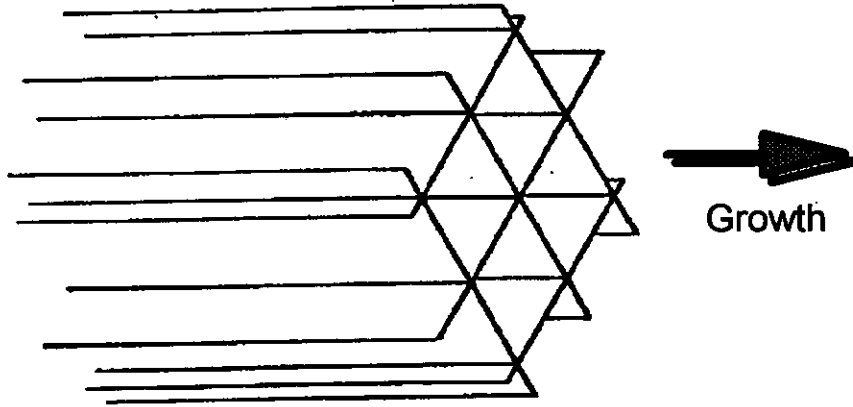
Cellular growth



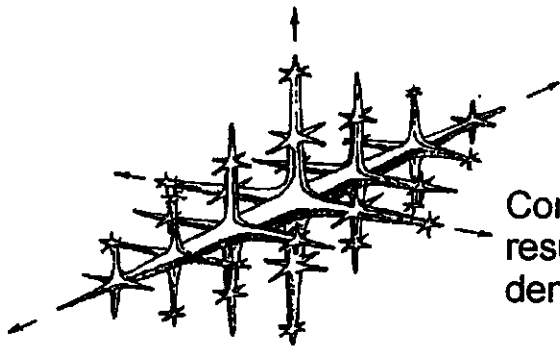
A bulge in the solid projects into the more undercooled liquid and so grows more. One effect is the cellular structure shown

Cellular Dendrite

Greater undercooling, e.g. due to reduced temperature gradients, produces a cellular dendritic structure

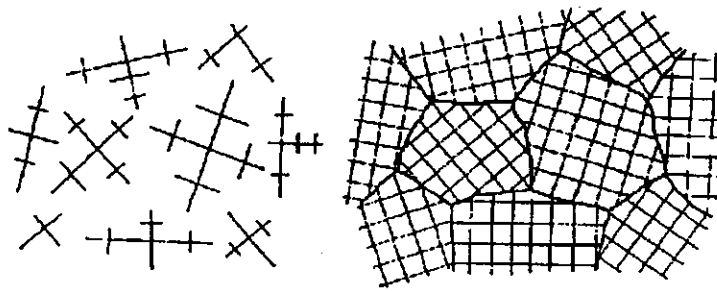


Equiaxed dendritic growth



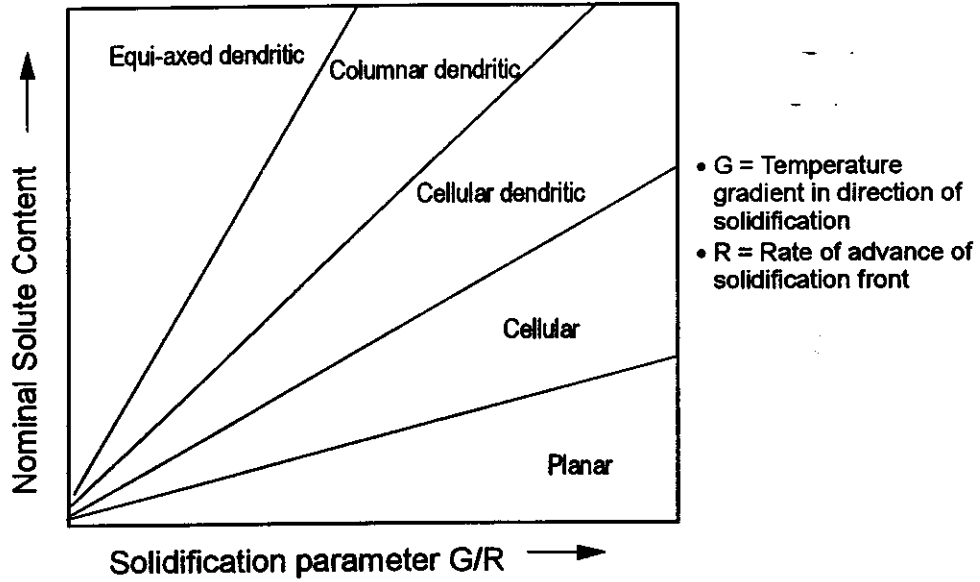
Dendrite

Continued increases in undercooling result in solidification of the melt by dendrite formation and growth



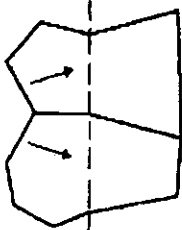
Solidification Modes

Factors controlling crystal growth mode

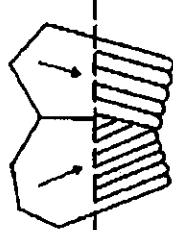


Epitaxial Growth

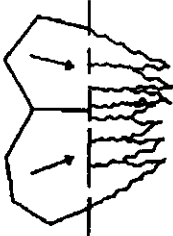
base metal solidified weld metal grains



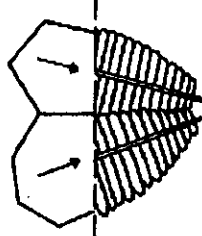
(a) planar



(b) cellular



(d) columnar dendritic



(c) cellular dendritic

- The crystals in solidifying weld metal nucleate on grains in the surrounding solid.
- Crystals whose orientations are favourable for growth dominate.
- Termed "competitive epitaxial growth."
- Results in a directional solidification structure.

J.F. Lancaster Metallurgy of Welding
George Allen & Unwin, 1980

Weld Solidification Macrostructure



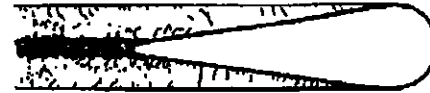
(a) Axial (2.5 mm/s)



(b) Stray (3.3 mm/s)



(c) Competitive columnar
(7.5 mm/s)



(d) Partially Equi-axed (8.3 mm/s)



(e) Centreline (16.7 mm/s)

J.F. Lancaster Metallurgy of Welding
George Allen & Unwin, 1980

Reactions in the solid phase

- Annealing, recrystallization & grain growth
- Precipitation hardening
- Phase transformation

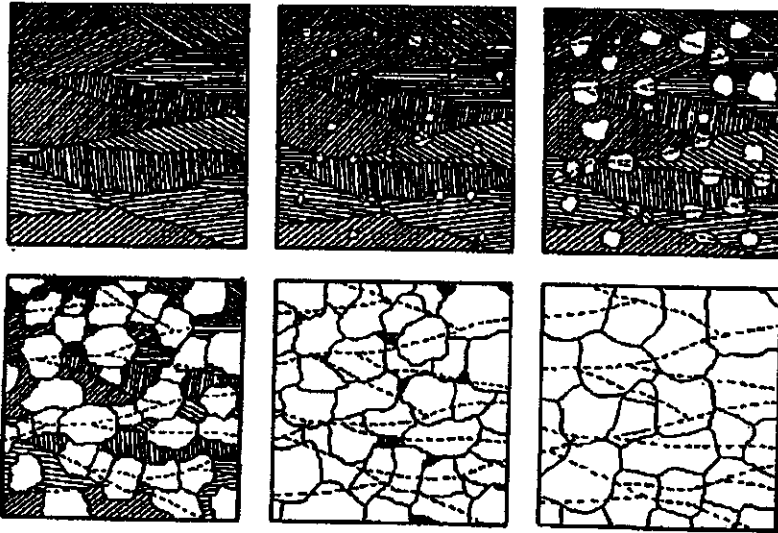
(

(

Annealing and Recrystallization

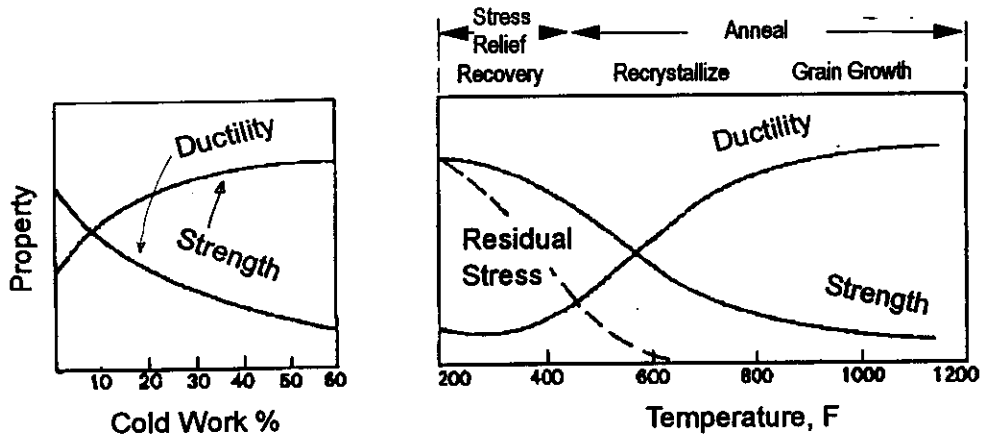
- Welding has little effect on the properties of *annealed* single phase alloys that are strengthened by *solution strengthening*
 - e.g. hot rolled low carbon steels, austenitic stainless steels, commercially pure aluminum, titanium and zirconium.
- However, when such materials are strengthened by cold work, the weld thermal cycle induces recrystallization and grain growth
- The welding heat anneals the heat affected zone, reducing its strength and increasing ductility

Stages in Recrystallisation



Top from left: cold worked grains, nucleation of new undeformed grains
Bottom: growth of new grains, completely recrystallized microstructure

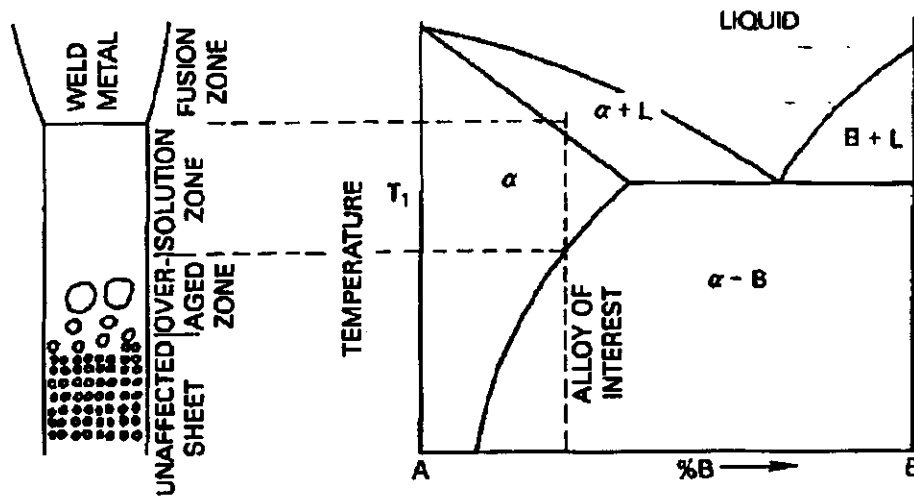
Effect of Cold Work and Annealing



Precipitation Hardening

- *Precipitation hardening* alloys are strengthened by fine precipitates dispersed in the matrix
 - Al, Cu, stainless steel
- PH alloys are hardened by heating to a high temperature, at which the solutes are taken into solution, and quenching, followed by ageing at a lower temperature to permit the development of fine precipitates.

Weld & HAZ in PH alloys



Effects of Welding on PH Alloys

- The weld thermal cycle disrupts the microstructure of alloys welded in the hardened condition
- The weld metal and high-temperature HAZ are in effect - solution treated.
- In parts of the HAZ that reach temperatures below the solution temperature, the precipitates coarsen, causing loss of strength. This over-ageing can be recovered only by full heat treatment
- However, precipitation hardening alloys can be welded with reasonable success in the solution-treated condition, followed by an ageing treatment after welding

Phase Transformations

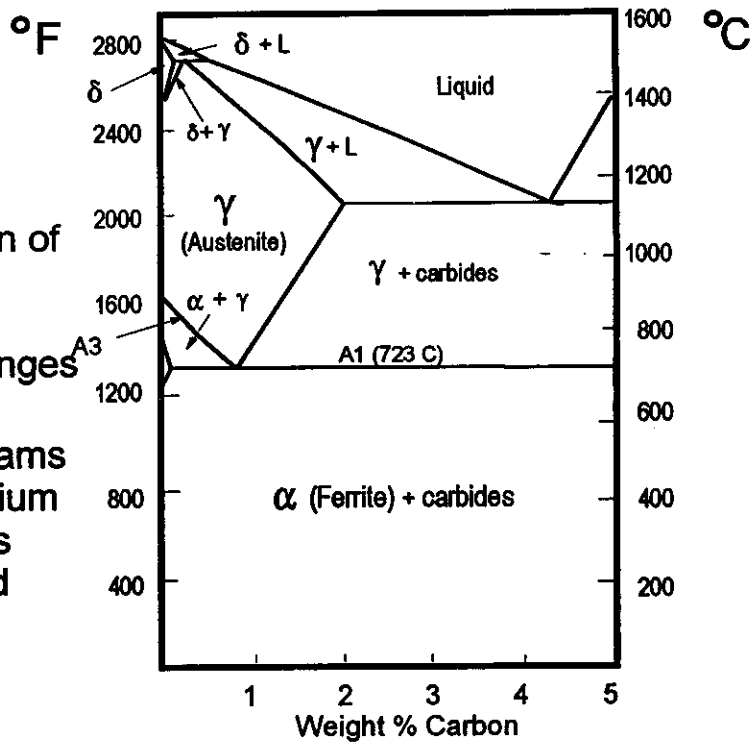
- The properties of steels are influenced by the phase transformations they undergo on heating and cooling
- Iron solidifies as a body-centred crystal structure named delta-ferrite
- On further cooling it transforms to a face-centred cubic crystalline phase called gamma iron or austenite
- The austenite subsequently transforms back to a body-centred cubic form known as alpha iron or ferrite

Phase Transformations

- Austenite can dissolve up to 2% carbon, whereas ferrite can hold only 0.025% carbon in solution
- On transformation to from austenite to ferrite, carbon in solution in austenite in excess of 0.025% forms carbide precipitates.
- The austenite to ferrite transformation and the behaviour of carbon are the most important determinants of the properties of steels.

Fe-C Phase Diagram

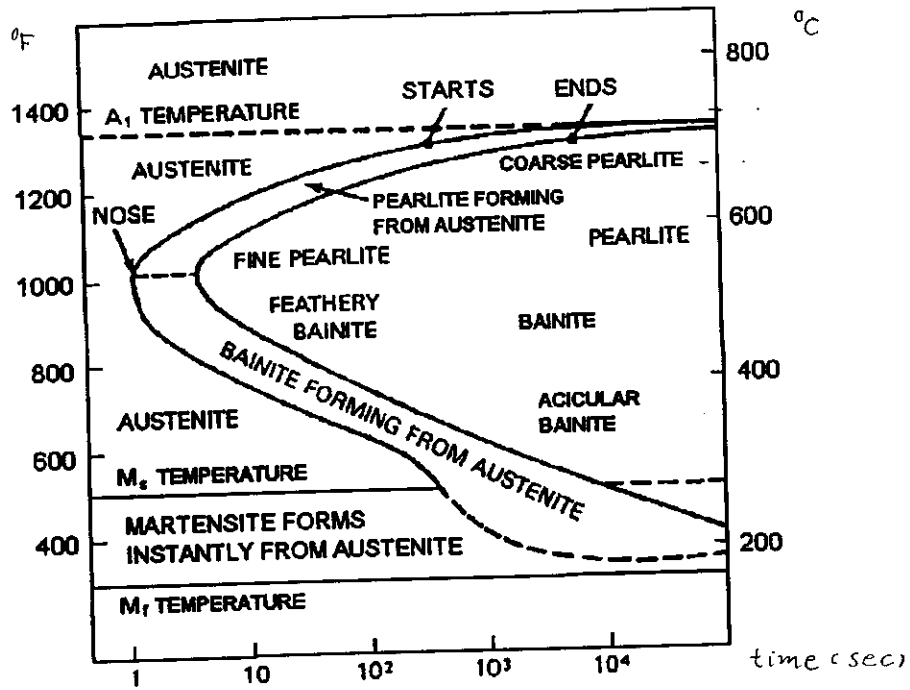
- The concentration of carbon alters the temperatures at which phase changes occur.
- This phase diagrams show the equilibrium phases at various compositions and temperatures



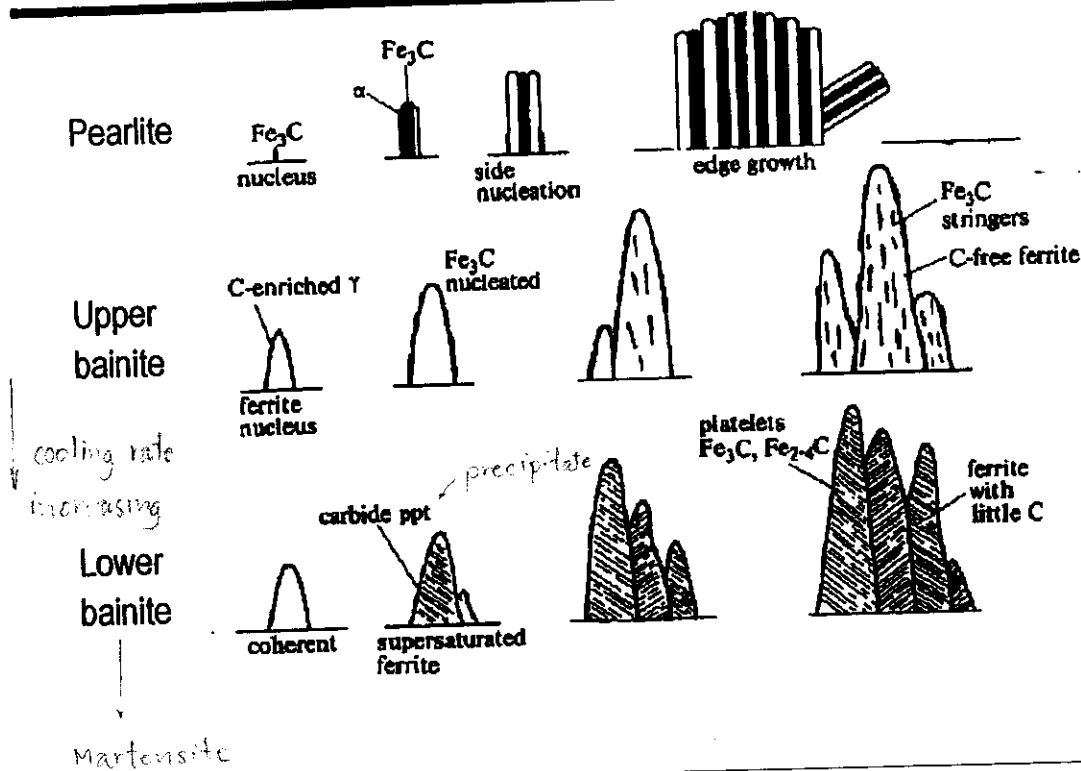
Kinetic effects

- During rapid heating and cooling, non-equilibrium phase structures develop.
- The iron-carbon phase diagram does not provide information about:
 - the transformation of austenite to non-equilibrium phase structures,
 - give details on the kinetics of transformation,
 - show the relationship between transformation temperature and products.
- The time-temperature transformation diagram (TTT diagram) is useful for these purposes

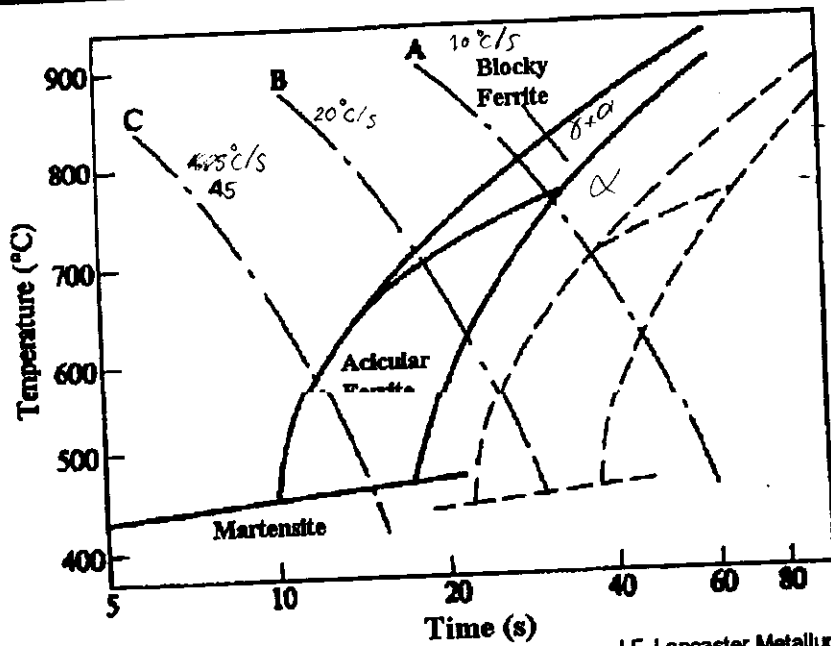
TTT Diagram (0.8% C steel)



Transformation products in steel



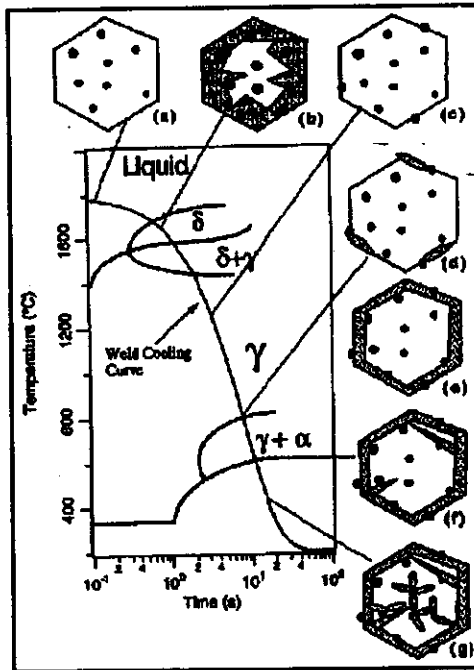
Continuous Cooling Transformation (CCT) Diagram



J.F. Lancaster Metallurgy of Welding
George Allen & Unwin, 1980

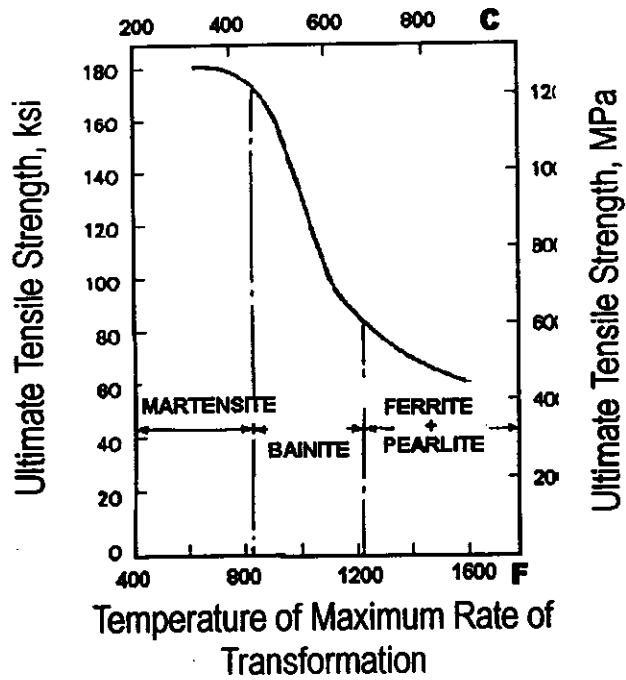
CCT diagram

- a. inclusion formation
- b. solidification of liquid to delta ferrite
- c. fully austenitic structure
- d. nucleation of allotropic ferrite
- e. growth of ferrite
- f. Widmanstatten ferrite formation
- g. acicular ferrite formation

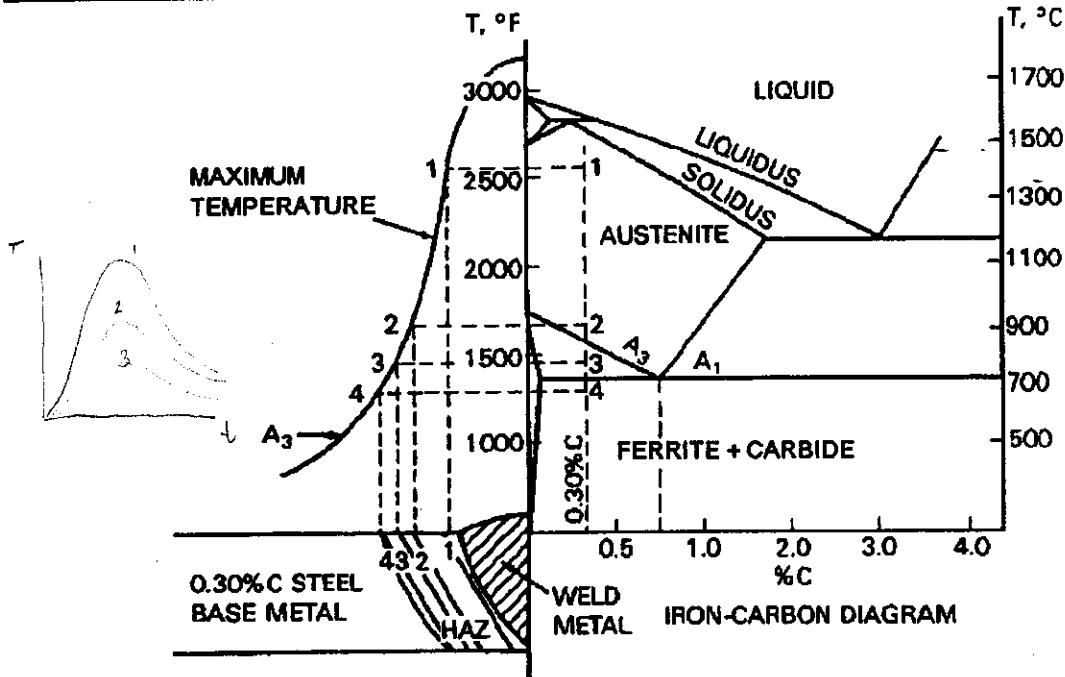


K. Mundra, T. DeBroy, S.S. Babu and S.A. David: Welding Journal Research Supplement April 1997, 163s-171s

Effect of Transformation Temp



HAZ Structure in Steels



HAZ Structure in Steels

- In the preceding figure, Regions 1 and 2 were heated above A3 and were transformed fully into austenite and back on cooling
- Region 1 exceeded the temperature at which the carbide particles that pin the austenite grain boundaries dissolve, causing austenite grain growth
- Region 3 was heated between the A1 and A3 temperatures and partially transformed to austenite
- Region 4 did not exceed A1 and is termed the "sub-critical HAZ." Some annealing or tempering may occur in this region.

Book 7 1

METALLOGRAPHY OF WELDS IN CARBON- MANGANESE STEELS

Slide set number 7

INTRODUCTORY NOTES

 **The Welding Institute**
Abington Hall Abington Cambridge CB1 6AL UK

Weld metals

Principal microstructures of weld metals 3

Slide number

0701	Single pass welds	5
0702 } 0703 }	{ Acicular ferrite and grain boundary ferrite	6
0704, 0705	Ferrite with aligned M-A-C	7
0706	Retained martensite and austenite	8
0707 } 0708 }	{ High heat input welds	9
0709	Heat treatment	10
0710 } 0711 }	{ Multipass welds	11
		13
		14
		15

Heat affected zones

0712	Heat affected zone	16-
0713	Coarse grained super- critical HAZ	18
0714	Fine grained super- critical HAZ	19
0715	Intercritical HAZ	20
0716	Subcritical HAZ	21
	Principal microstructural constituents in HAZs	23
	Typical microstructures in HAZs	25
0717-	Most rapid cooling	26
0722	Least rapid cooling	31
	Slides, wallcharts	32
	Key to identification letters	34

INTRODUCTION

Steels alloyed with carbon (C) (0.1-0.25%) and manganese (Mn) (1-2%) are used in many applications as economical constructional materials, and are often welded.

The mechanical properties of weld metals in C-Mn steels (such as strength and toughness) are determined primarily by microstructure, which is dependent on factors such as chemical composition, thermal history and the type and quantity of any non-metallic inclusions. The microstructure is revealed by the standard metallographic technique of sectioning, polishing and etching, followed by examination under a microscope. The normal etchant is nital (2% nitric acid in ethyl alcohol, requiring established safety precautions), and was used in the preparation of all the samples except that shown in slide 0706.

In assessing the properties of C-Mn steel weld metals, it is important to be able to recognise the various microstructural types; these slides illustrate their normal appearances.

The terminology for describing weld metal microstructures can vary considerably, but this chart follows that currently proposed by the International Institute of Welding (Commission IX-J).

The second part of this slide set deals with the effect of welding on the adjacent unmelted parent metal designated the heat affected zone or HAZ.

HAZ microstructures in C-Mn steels are governed by the steel chemistry and the thermal cycle experienced. Increases in the alloy content, the peak temperature, time at peak temperature and the cooling rate through the transformation of temperature range will all promote the formation of higher hardness constituents in the microstructure. The thermal cycle at any point in the HAZ is highly dependent on the heat input and the distance from the fusion boundary. As this

reduced, giving progressively smaller microstructures. This is shown in slide 0712, which illustrates the whole heat affected zone, starting with the fusion boundary on the left.

ACICULAR FERRITE
Acicular ferrite consists of small laths of ferrite, of low aspect ratio, which occur in several distinct orientations, and which therefore give the appearance of an interlocking microstructure. This microstructure is usually associated with excellent toughness. The laths are formed in intragranular regions, and it is believed that transformation is nucleated at fairly high temperatures (about 800°C).

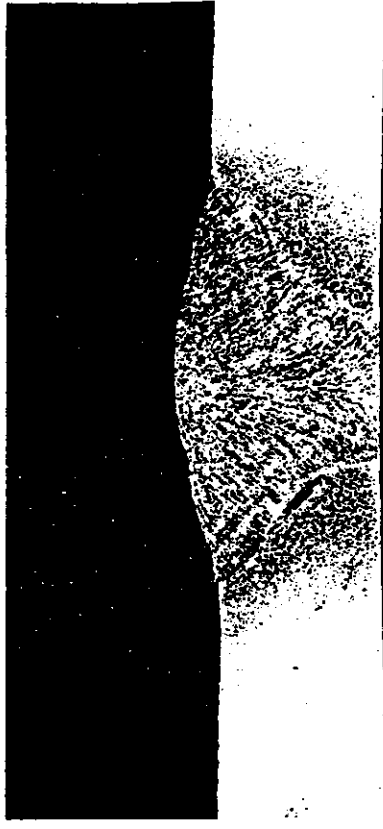
FERRITE WITH ALIGNED MARTENSITE/AUSTENITE/CARBIDES (M-A-C)

This microstructure can be easily distinguished from acicular ferrite, because the individual laths lie parallel to each other, have a much larger aspect ratio, and are usually nucleated at an austenitic grain boundary. One or more minor phases (martensite, austenite and carbides) are always found on the interlath boundaries. Ferrite with aligned M-A-C is generally associated with poor toughness, except in lower strength welds.

FERRITE-CARBIDE AGGREGATES (INCLUDING PEARLITE)

In high heat input welds, which have a slow cooling rate, formation of polygonal ferrite leads to rejection of carbon by the advancing transformation interface, and eventually the carbon content can rise sufficiently to transform by eutectoid decomposition, giving either pearlite or a ferrite/carbide aggregate containing equiaxed carbides in a ferritic matrix.

SINGLE PASS WELDS



0701 //i © The Welding Institute UK 1984

5mm

In all fusion welding processes, the weld metal exhibits a predominantly columnar grain structure, elongated in the direction of maximum heat flow from the weld. The grain structure revealed by the usual nital etch does not represent the solidification structure, but rather the structure of the austenite grains when they started to decompose to ferrite (prior austenite structure). The solidification structure can be revealed by suitable segregation-seeking etches, and shows a very much finer structure than the austenitic grain structure. Retained phases usually, lie on solidification boundaries.

POLYGONAL FERRITE

Grain Boundary Ferrite

Intragranular Ferrite

Polygonal ferrite can nucleate both at austenite grain boundaries, and in intragranular regions. It is the product of transformation at high temperatures, and its formation is therefore favoured in high heat input welds. Large amounts of grain boundary polygonal ferrite are not generally considered beneficial for toughness, especially in higher strength steels, although intragranular polygonal ferrite is never present in sufficient quantity to influence properties significantly. It is generally of lower strength than other transformation products.

MARTENSITE

Complete transformation of C-Mn steel weld metal to martensite is unusual, but not unknown. It can happen in conditions where the cooling rate is artificially enhanced (i.e. in underwater welding), and is promoted by the use of low heat input. The toughness is generally very poor, and the strength very high.

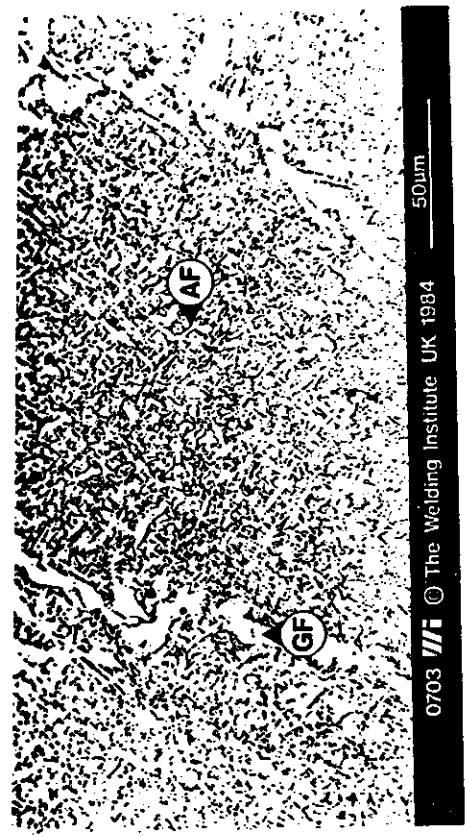
MINOR PHASES

Because of segregation during solidification, the last regions to solidify often have a much higher content of alloying elements than the rest of the weld; such regions do not always transform from austenite, or may transform at such a temperature that martensite is formed.

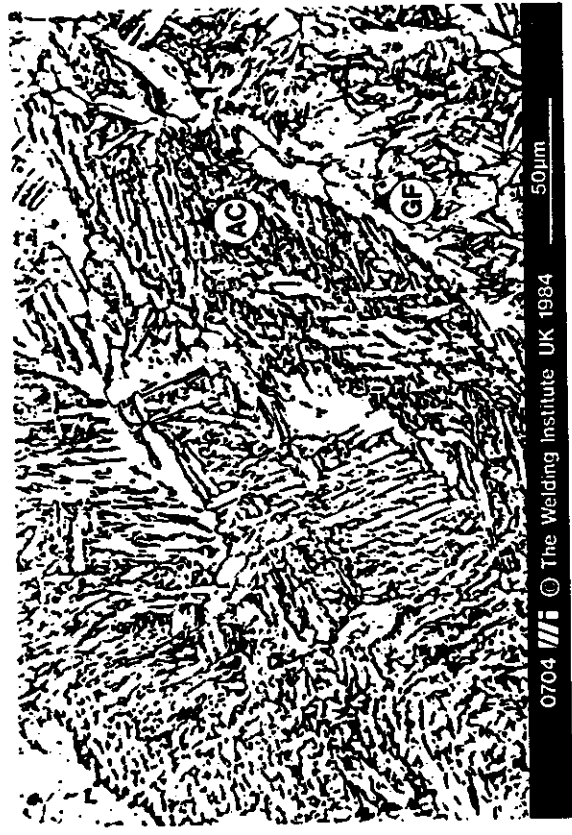


0702 //I © The Welding Institute UK 1984 50µm

The micrographs above and on the next page show acicular ferrite, AF and grain boundary ferrite GF. Note the interlocking appearance of the acicular ferrite, its low aspect ratio, and the fairly clearly defined orientations along which the laths lie. The amount of grain boundary ferrite can vary considerably.



0703 //I © The Welding Institute UK 1984 50µm

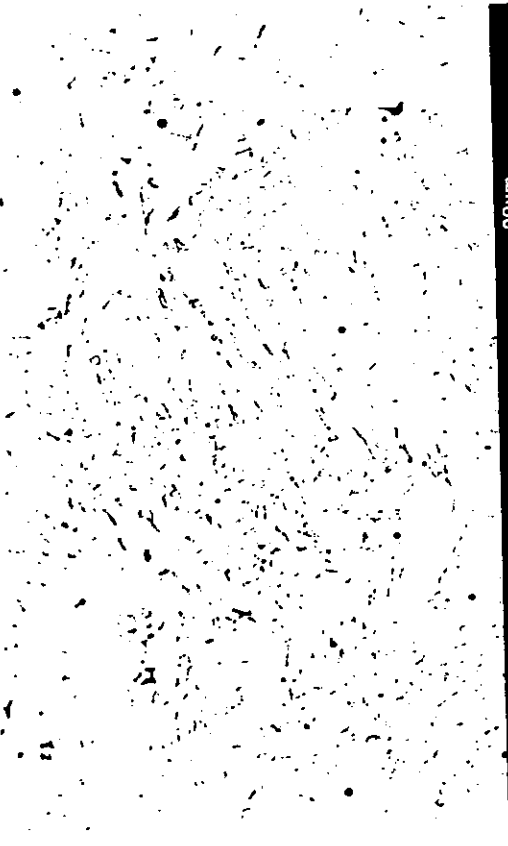


FERRITE WITH ALIGNED M-A-C

The micrographs above and below show typical examples of ferrite with aligned M-A-C AC. The appearance of this phase can vary substantially as shown in these two examples.



0705 // The Welding Institute UK 1984 50µm



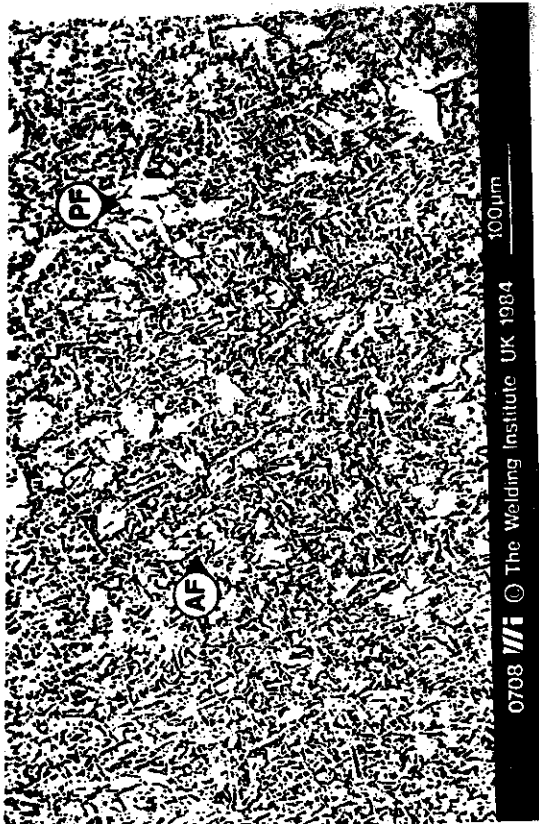
0706 // The Welding Institute UK 1984 20µm

The presence of 'retained' phases (austenite and martensite) is revealed using a picric acid (5% picric acid in ethyl alcohol) etch. The volume fraction of these phases can be quite substantial, but they are often difficult to detect if conventional nital etches are used.

HIGH HEAT INPUT WELDS



The above microstructure, from a high heat input electroslag weld, shows development of grain boundary ferrite GF and pearlite P on austenite grain boundaries, and both acicular ferrite and ferrite with aligned M-A-C in intragranular regions. Other ferrite carbide aggregates FC which etch lighter than pearlite can also be seen.



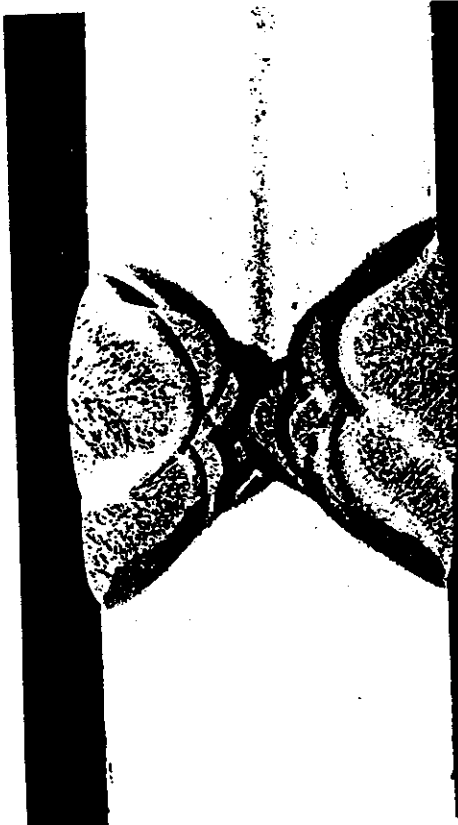
This micrograph, again from a high heat input electroslag weld, shows isolated regions of polygonal ferrite PF in a matrix of acicular ferrite. Because of the slower cooling rate, greater carbide rejection has occurred during transformation, resulting in small colonies of pearlite being formed between the individual ferrite laths. Note that the acicular ferrite is much coarser in this example than in others in this series, which were made at lower heat input.

HEAT TREATMENT



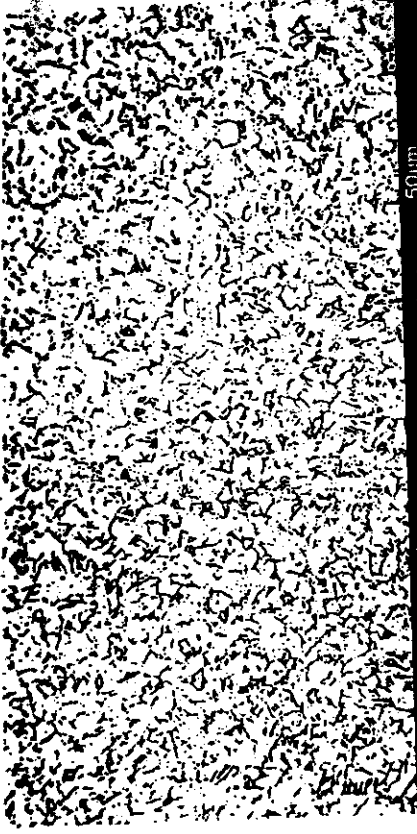
0709 I/I © The Welding Institute UK 1984 100µm

Conventional post-weld normalising does not give such a fine microstructure as normalising by subsequent welding, as the thermal cycle is much longer. This microstructure, from a thick section plate, shows a typical ferrite F pearlite P structure. The pearlite regions are generally associated with the solidification boundaries, more noticeably in high heat input welds where initial segregation is probably greater. Stress relief by heat treatment is not readily visible in the microstructure. It can lead to transformation of retained phases, precipitation of carbides etc., and spheroidisation of pearlite in high heat input welds.



0710  © The Welding Institute UK 1984 10mm

Where a joint is welded in more than one run, the microstructure of the early runs can be completely altered by the heat from subsequent passes. Where the temperature rises above a critical value (Ac_3) in the region of $875^\circ C$, then complete transformation to austenite will occur, which results in a refined structure which is essentially similar to a normalised structure, i.e. containing only equiaxed ferrite and carbides. As the thermal gradients due to successive passes are steep, the microstructures in reheated regions can vary considerably over short distances.

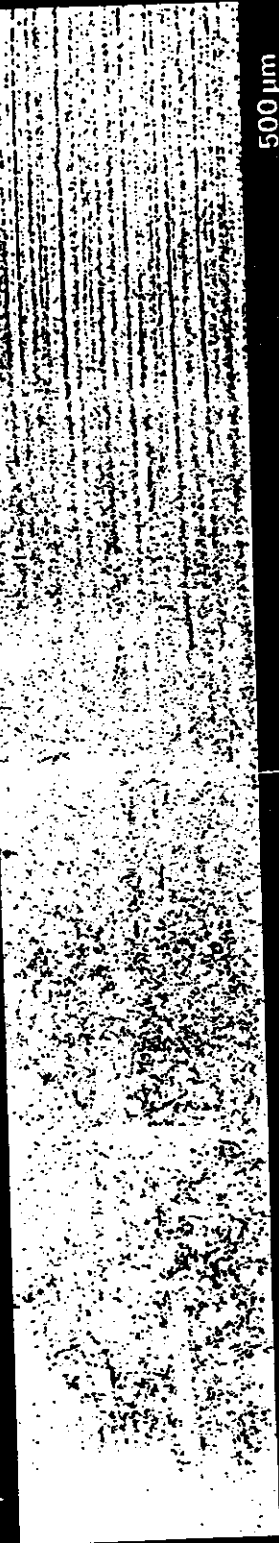


0711  © The Welding Institute UK 1984 50µm

Weld metal which has been reheated above Ac_3 by a subsequent weld pass has a rapid thermal cycle, resulting in a very fine ferritic transformation structure. Such a microstructure is normally associated with very good toughness.

HEAT AFFECTED ZONE

↓ Fusion boundary

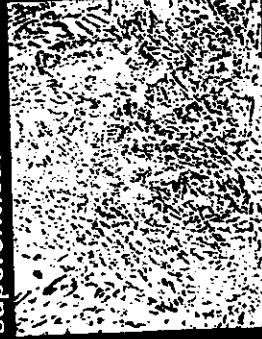


Parent metal not visibly affected

Weld metal

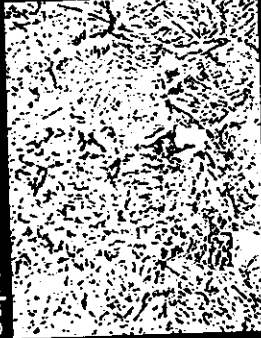
500 µm

Coarse-grained supercritical



0713

Fine-grained supercritical



0714

Intercritical



0715

Subcritical



0716

100 µm

For view at higher magnification see Slide 0713

0712  © The Welding Institute UK 1984

formation range are reduced, giving progressively softer microstructures. This is shown above, which illustrates the whole heat affected zone, starting with the fusion boundary on the left.

The thermal cycle at any point in the HAZ is highly dependent on the heat input and the distance from the fusion boundary. As this distance increases, the peak temperature and cooling rate through the trans-



0713 //i © The Welding Institute UK 1984

50µm

A view at higher magnification of part of the heat affected zone shown in slide 0712, near the fusion boundary, heated to a temperature sufficient to permit rapid austenite grain growth, typically above 1000°C.

18



0714 //i © The Welding Institute UK 1984

50µm

A view at higher magnification of part of the heat affected zone shown in slide 0712, towards the fusion boundary, but farther from it than slide 0713, heated to a temperature above A_{c3} , but insufficient to produce rapid austenite grain growth.

19

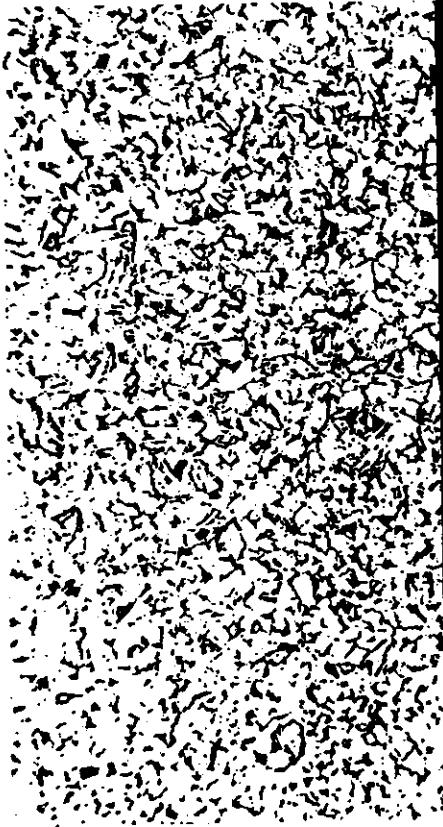
SUBCRITICAL HAZ



0716  The Welding Institute UK 1984 50µm

A view at higher magnification of part of the heat affected zone shown in slide 0712, near the parent metal, maximum temperature less than Ac_1 . Pearlite may be spheroidised.

INTERCRITICAL HAZ



0715  The Welding Institute UK 1984 50µm

A view at higher magnification of part of the heat affected zone shown in slide 0712, towards the parent metal, but farther from it than the next picture, heated to a temperature between Ac_1 and Ac_3 , resulting in only partial transformation to austenite. Substantial refinement occurs.

MARTENSITE

Although this constituent M is promoted by increased alloy content, it can also be found in common C-Mn steels welded at low heat input. It is hard, usually of poor toughness, and can give rise to HAZ hydrogen cracking. Complete transformation to martensite is unusual in the HAZs of C-Mn steels, and only occurs when cooling is very rapid.

FERRITE WITH MARTENSITE/AUSTENITE/ CARBIDES (M-A-C)

This is generally the predominant microstructural constituent in C-Mn steels, occurring over a wide range of heat inputs. The illustrations show that ferrite with M-A-C can have an aligned AC or non-aligned FN appearance, but this variation is probably largely a sectioning effect.

INTRAGRANULAR WIDMANSTATTEN FERRITE

Intragranular Widmanstatten ferrite WF may be formed with high heat input. It can be distinguished from ferrite with M-A-C by the small aspect ratio of the ferrite laths, and the characteristic basket weave type of structure. It resembles acicular ferrite commonly found in weld metal. Intragranular Widmanstatten ferrite forms at higher transformation temperatures, and is favoured by the slower cooling rates associated with high heat input.

PRO-EUTECTOID FERRITE

This constituent FP is often formed on prior austenite grain boundaries, especially with high heat input. Its formation is suppressed by alloying elements which lower the austenite decomposition temperature.

This constituent P is associated with very high heat input, such as in electroslag welding, and is suppressed by alloying elements which depress the austenite decomposition temperature. It is generally found only in association with pro-eutectoid ferrite.

FERRITE-CARBIDE AGGREGATES

This phase FC appears in regions away from prior austenite boundaries, and is the result of the eutectoid decomposition reaction. At very high magnifications, it appears as a dispersion of carbides in ferrite.

TYPICAL MICROSTRUCTURES IN HEAT AFFECTED ZONES

Slides 0712-0716 show one HAZ with a limited range of cooling rates; the following six photographs, slides 0717-0722, illustrate a wide range of HAZ microstructures arranged in order of cooling rate, starting with the most rapid.

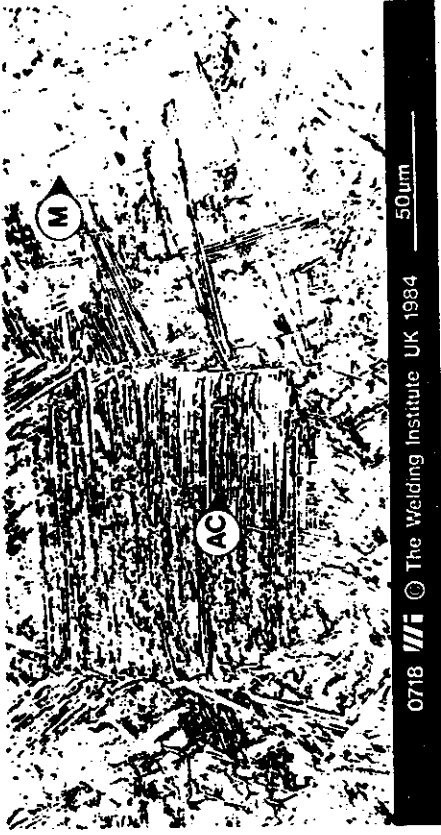
Most rapid cooling — low heat input

- 0717
- 0718
- 0719
- 0720
- 0721
- 0722

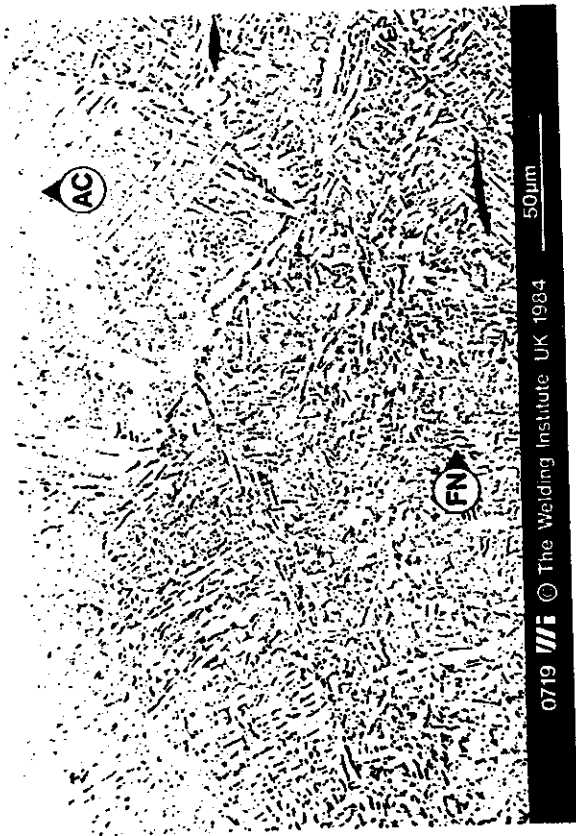
Least rapid cooling — highest heat input



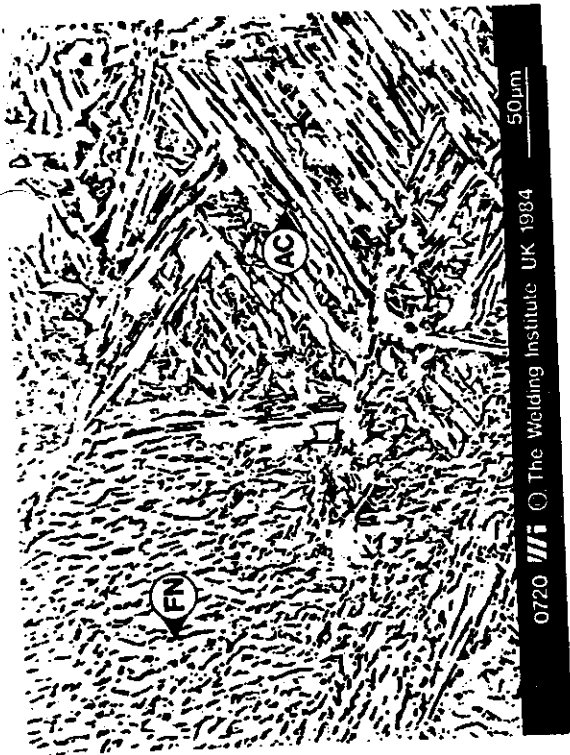
In this example, transformation to martensite is virtually complete.



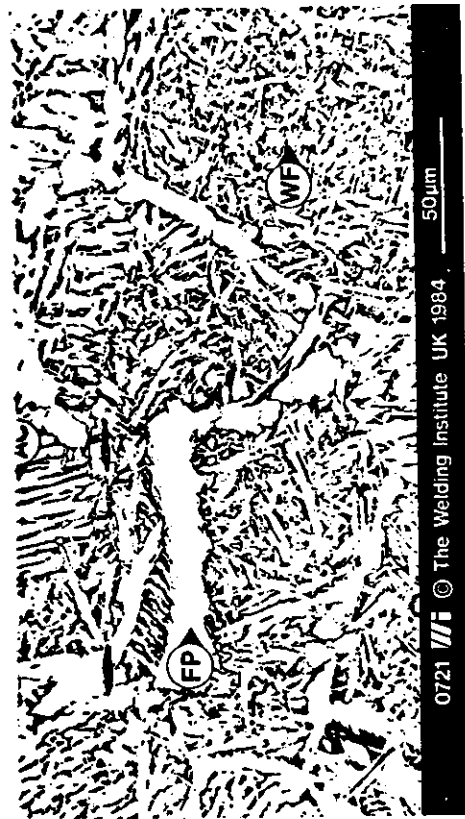
The ferrite with aligned M-A-C, AC, is nucleated primarily at prior austenite grain boundaries. Martensite M is also present.



Fine ferrite with M-A-C, showing aligned AC and non-aligned FN modes. In this example, grain boundary ferrite is suppressed.



Coarser ferrite with M-A-C than in slide 0719 present in both modes, aligned AC and non-aligned FN.



Coarse ferrite with M-A-C is present in both aligned AC and non-aligned FN modes, as in slide 0720. Pro-eutectoid ferrite FP and intragranular Widmanstätten ferrite WF are also present.



Pearlite P and ferrite-carbide aggregates FC are shown here, in a high heat input electroslog weld: they are generally associated with a high proportion of pro-eutectoid ferrite FP.

3
 24
 14
 13
 11
 18
 5
 10,11
 14

Carbides

- dispersion
- equiaxed
- precipitation
- rejection

Coarse grained HAZ
 Columnar structure
 Electroslag weld
 Equiaxed

Etches

- segregation-seeking
- Etching
- Ethyl alcohol
- Eutectoid decomposition

Ferrite

- acicular
- equiaxed
- grain boundary
- intragranular
- laths
- polygonal
- proeutectoid
- transformation
- with M-A-C

Ferrite-carbide aggregates

Fine grained HAZ

Fusion boundary ferrite

Grain boundary ferrite

Grain growth

Heat affected zone

Heat input

Heat treatment

High heat input welds

Hydrogen cracking

International Institute of Welding

Intercritical HAZ

Intergranular regions

Interlath boundaries

Interlocking microstructure

Intragranular-

- ferrite
- Widmanstätten ferrite

KEY

Identification letters

AC Ferrite with aligned M-A-C

AF Acicular ferrite

F Ferrite

FC Ferrite-carbide aggregates

FN Ferrite with non-aligned M-A-C

FP Pro-eutectoid ferrite

GF Grain boundary

M Martensite

P Pearlite

PF Polygonal ferrite

WF Intragranular Widmanstätten ferrite

INDEX

Constituent

Acicular ferrite

Ac₁ 3,6,10

Ac₃ 20,21

Aligned M-A-C 14,15,19,20

Aspect ratio 3,28,29,30

Austenite 3,6,23

- decomposition temperature 3,5,14,20

- grain boundary 23,24

- grain growth 10

Basket weave structure 18,19

Carbon 23

Discussed on page

3,23

3

3,24

23

23

4

23

3,24

4

23

Shown on page

8,27,28,29,30

6,7,10,11

13

10,30,31

28,29,31

30

6,7,8,10

26,27

10,13,31

11

30

Shown on page

3,6,10

20,21

14,15,19,20

3,28,29,30

3,6,23

3,5,14,20

23,24

10

18,19

23

1

Martensite	3, 4, 23, 26, 27
Minor phases	4
Multipass welds	14
Nital	1, 5, 9
Nitric acid	1
Non-aligned M-A-C	28, 29, 30
Normalising	13
Pearlite	3, 10, 11, 13, 24, 31
- spheroidisation	13, 21
Picral	9
Picric acid	9
Polishing	1
Polygonal ferrite	3, 4, 11
Prior austenite	5, 23, 27
Pro-eutectoid ferrite	23, 24, 30, 31
Reheated regions	14
Refinement	20
Retained phases	5, 9, 13
- austenite	9
- martensite	9
- transformation	13
Sectioning	1
Segregation	13
Single pass welds	5
Solidification boundaries	5, 13
Spheroidisation	13, 21
Strength	1
Stress relief	13
Subcritical HAZ	21
Supercritical HAZ	18, 19
Thermal cycle	1, 13, 15, 16
Thermal gradient	14
Thick section	13
Toughness	1, 15, 23
Transformation	14, 15, 20, 26
Underwater welding	4
Widmanstätten ferrite	23, 30